

# Financial and social inclusion in Europe

D. Federico ■  
R. Grazioli ■  
M. A. Milioli ■  
A. Notte ■  
L. Poletti ■



**Domenica Federico** is Associate Professor of Financial Intermediation at eCampus University, Italy.

Contact: [domenica.federico@uniecampus.it](mailto:domenica.federico@uniecampus.it)  
Tel.: + 39 347 145 6700



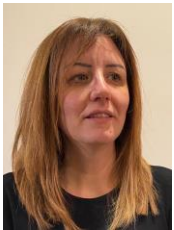
**Riccardo Grazioli** is PhD Candidate of Sociology at Catholic University of the Sacred Heart, Italy.

Contact: [riccardo.grazioli@unicatt.it](mailto:riccardo.grazioli@unicatt.it)  
Tel.: +39 328 549 1424



**Maria Adele Milioli** is Associate Professor of Statistics at University of Parma, Italy.

Contact: [mariaadele.milioli@unipr.it](mailto:mariaadele.milioli@unipr.it)  
Tel.: +39 0521 902 465



**Antonella Notte** is Associate Professor of Corporate Finance at eCampus University, Italy.

Contact: [antonella.notte@uniecampus.it](mailto:antonella.notte@uniecampus.it)  
Tel.: +39 347 533 1833



**Lucia Poletti** is Associate Professor of Financial Intermediation at University of Parma, Italy.

Contact: [lucia.poletti@unipr.it](mailto:lucia.poletti@unipr.it)  
Tel.: +39 0521 032 014

**Editor:**

Helmut Kraemer-Eis,  
Head of EIF's Research & Market Analysis, Chief Economist

**Contact:**

European Investment Fund  
37B, avenue J.F. Kennedy, L-2968 Luxembourg  
Tel.: +352 248581 394  
[http://www.eif.org/news\\_centre/research/index.htm](http://www.eif.org/news_centre/research/index.htm)  
Luxembourg, March 2021



Scan above to  
obtain a PDF  
version of this  
working paper

**Disclaimer:**

This Working Paper should not be referred to as representing the views of the European Investment Fund (EIF) or of the European Investment Bank Group (EIB Group). Any views expressed herein, including interpretation(s) of regulations, reflect the current views of the author(s), which do not necessarily correspond to the views of EIF or of the EIB Group. Views expressed herein may differ from views set out in other documents, including similar research papers, published by EIF or by the EIB Group. Contents of this Working Paper, including views expressed, are current at the date of publication set out above, and may change without notice. No representation or warranty, express or implied, is or will be made and no liability or responsibility is or will be accepted by EIF or by the EIB Group in respect of the accuracy or completeness of the information contained herein and any such liability is expressly disclaimed. Nothing in this Working Paper constitutes investment, legal, or tax advice, nor shall be relied upon as such advice. Specific professional advice should always be sought separately before taking any action based on this Working Paper. Reproduction, publication and reprint are subject to prior written authorisation.

## Preface

The EIF supports Europe's SMEs - including microenterprises - by improving their access to finance through a wide range of selected financial intermediaries. To this end, the EIF primarily designs, promotes and implements equity and debt financial instruments which specifically target SMEs. In this role, the EIF fosters EU objectives in support of entrepreneurship, growth, innovation, research and development, and employment.

Against this background, to assess the effects of the support - *the Impact Assessment* - is an important topic for the EIF, and a focus area of EIF's Research & Market Analysis. Many analyses in the field of SME guarantees and Venture Capital have already been published.<sup>1</sup>

Regarding microfinance in Europe - as a tool for inclusive finance – the EIF has been involved since 2000, providing funding (equity and loans), guarantees and technical assistance to a broad range of financial intermediaries, from small non-bank financial institutions to well established microfinance banks to make microfinance a fully-fledged segment of the European financial sector. The EIF has become an important pillar of this segment in Europe, by managing specific initiatives mandated by the European Commission, the EIB, and other third parties, as well as by setting up operations using own resources.

The Working Paper, presented here, results from a research project on “Measuring Microfinance Impact in the EU. Policy recommendations for Financial and Social Inclusion” (Memi), initiated by the EIF. The aim of this project is to contribute to the debate whether microfinance is able to deliver the expected impact in terms of financial and social inclusion. This part of the project is funded by the EIB Institute under the EIB-University Research Sponsorship (EIBURS).

EIBURS is an integral part of the Knowledge Programme (one of the three flagship programmes of the Institute); this programme aims to provide support, mainly through grants or sponsorship, to higher education and research activities. EIBURS supports universities and research centres working on research topics and themes of major interest to the EIB Group. EIB bursaries, of up to EUR 100,000 per year for a period of three years, are awarded through a competitive process to university departments or research centres associated with universities in the EU, Accession or Acceding Countries.

This particular Working Paper “**Financial and social inclusion in Europe**” is the last paper that followed other two papers resulting from the Memi project.<sup>2</sup>

*Helmut Kraemer-Eis,*  
*Head of Research & Market*  
*Analysis, Chief Economist, EIF*

*Per-Erik Eriksson,*  
*Head of Inclusive Finance, EIF*

*Salome Gvetadze,*  
*Research Officer at Research*  
*& Market Analysis, EIF*

---

<sup>1</sup> See: [https://www.eif.org/news\\_centre/research/index.htm](https://www.eif.org/news_centre/research/index.htm).

<sup>2</sup> EIF Working Paper 2020/065 “The social return on investment (SROI) of four microfinance projects” and EIF Working Paper 2020/066 “Measuring microfinance impact: A practitioner perspective and working methodology”.

## Abstract

This paper looks at the state of financial and social inclusion and financial sector development in EU Member States. More precisely, one of the objectives is to find out whether financial and social exclusion can coexist in the same countries, taking into account the development of the financial sector. The study outlines extensive literature on definitions and measures of financial and social inclusion. It also identifies clusters of countries, with internally similar but externally distinct characteristics. Methodologically, the research collects and analyses data extrapolated from different sources in the period 2016-2017. The methodology exploits a Principal Component Analysis (ACP) and a Cluster Analysis.

## Table of contents



1	<i>Introduction</i> .....	1
2	<i>Literature on definitions and measures</i> .....	3
3	<i>The literature on the determinants of financial sector development</i> .....	17
4	<i>Data and methodology</i> .....	19
5	<i>Multivariate statistical analysis</i> .....	22
6	<i>Evaluation of the results and some development prospects</i> .....	30
7	<i>Conclusions</i> .....	33
	<i>References</i> .....	35
	<i>About</i> ... ..	42
	... <i>the European Investment Fund</i> .....	42
	... <i>EIF's Research &amp; Market Analysis</i> .....	42
	... <i>this Working Paper series</i> .....	42
	<i>EIF Working Papers</i> .....	44



# 1 Introduction

Financial inclusion has emerged as an important topic on the global policy agenda for sustainable development due to its contribution to the economic development of a country. An inclusive financial system ensures efficient allocation of productive resources and thereby reduces the cost of capital and offsets the need for informal sources of credit.

Certain Central Banks have introduced schemes to improve financial inclusion in their countries and an increasing number of frontrunners [e.g., International Finance Corporation (IFC), International Monetary Fund (IMF), Group of Twenty (G20), Alliance for Financial Inclusion (AFI), European Investment Bank Group (EIB group) and Consultative Group to Assist the Poor (CGAP)] are also playing an active role internationally.

Social inclusion too has become central to policy and to academic discourse in Europe. The concept is widely used and appears to be very attractive to the producers of social policy discourse.

The academic literature focuses on understanding to what extent financial system development leads to financial and social inclusion. There is a consensus that financial sector development contributes indirectly to poverty reduction through economic growth. Higher growth benefits the poor by creating more jobs, enabling the government to allocate more fiscal resources to social spending, and increasing funds available to the poor for investment.

It is widely agreed that financial sector development also supports directly poverty reduction by broadening the access to finance of the disadvantaged and vulnerable groups. The financial system facilitates transactions, by reducing their costs, provides the opportunity to accumulate assets, and enables poor households to better cope with shocks, thus mitigating the risk of poverty.

It is thus clear why the European Union encourages the development of initiatives such as microfinance schemes focused on financial and social inclusion, job creation and economic growth in general. For example, in many European countries, microfinance is gradually being consolidated as an essential social policy tool for the promotion of self-employment, microenterprise support, and the fight against social and financial exclusion.

This paper investigates the phenomenon of financial and social inclusion and financial sector development in European Union Member States (EU27) and the United Kingdom (UK). The objective is to describe the status of the EU28<sup>3</sup> countries, from the point of view of both financial and social inclusion and the development of the financial sector. The paper identifies country clusters, with internally homogeneous but externally heterogeneous characteristics. The analysis aims at showing if social exclusion and financial exclusion coexist in the same countries, taking into account the development of the financial sector.

Methodologically, the research collects and analyses data extrapolated from different sources in the period 2016-2017. It is conducted through a Principal Component Analysis (ACP), which outlines relationships between the different dimensions of the phenomena (formal financial inclusion, social inclusion and development of financial sector), and a Cluster Analysis which classifies a set of units

---

<sup>3</sup> As the data used for this paper cover pre-Brexit period, the EU27 and the UK will be called EU28 in this paper.



into groups with the characteristics of internal cohesion (the units in the same cluster must be similar to each other) and external separation (the clusters must be as distinct as possible). The analysis was performed before the COVID-19 crisis, therefore it does not capture worsening of certain financial and social indicators (in some countries more than in others), which perhaps would have resulted in a different composition of the clusters.

## 2 Literature on definitions and measures

In this section we describe the literature on definitions and measures of financial and social inclusion.

### Financial Inclusion

The concept of financial inclusion is complex and multifaceted. It is continuously developed in academic discourse and EU policy, however, there is no global definition of financial inclusion.

In the most common and very generic form, financial inclusion is defined “as the process of ensuring affordable, prompt and adequate access to a wide range of financial products and services, as well as a proliferation to their use in all parts of society with a special focus on vulnerable groups, through the implementation of existing and innovative approaches, such as financial literacy programmes” (Gortsos, 2016).

Conversely, the opposite of financial inclusion, i.e. financial exclusion, can be defined as the impossibility or reluctance of individuals or businesses to access essential financial services such as current and deposit accounts, loans, insurance services and of payment (Gortsos, 2016).

Existing literature on financial inclusion (or financial exclusion) uses varying definitions. Many studies define the concept in terms of financial exclusion, which relates to the broader context of social inclusion, while others define financial inclusion. Both concepts are closely intertwined.

In literature, financial inclusion (or exclusion) has been described by national and international literature since the 1990s (Table 1).

Early literature on financial exclusion concentrated on issues of geographical access to services, particularly bank branches, and tended to use a narrow view in terms of “access”.

Levitas (Levitas, 2006) and Leyshon & Thrift (Leyshon & Thrift, 1995) define financial exclusion as “processes that serve to prevent certain social groups and individuals from gaining access to the financial system”.

There is a general consensus that financial exclusion is primarily concerned with the lack of a bank account, particularly a current account. There are different degrees of financial exclusion, reflecting the availability of financial products and services widely available, their accessibility, appropriateness to the needs of individuals and the proper management of the same. Kempson et al. (Kempson, Whyley, Casley, & Collard, 2000) argue that exclusion may relate to those including those “who are refused all products, those who decide freely not to use them, and those who self-exclude because of the inappropriateness of current products to households in their financial circumstances”.

**Table 1 – Resume of literature on financial Inclusion / exclusion definition**

	Definition	Principal Authors
By concept	Financial inclusion	(Amidzic, Massara, & Mialou, 2014); (Hanning & Jansen, 2010); (Kempson & Collard, 2012); (OECD, 2013); (Sarma, 2012); (United Nations Capital Development Fund, 2006)
	Financial exclusion	(Carbo, Gardner, & Molyneux, 2005); (Conroy, 2005); (European Commission, 2008); (Gloukoviezoff, 2004); (Kempson & Whyley, 1999); (Kempson, Whyley, Casley, & Collard, 2000); (Leyshon & Thrift, 1995); (Mohan, 2006); (Sinclair, 2001); (World Bank, 2005)
By principal elements in the definition	Inability to “access” to the formal financial system	(Leyshon & Thrift, 1995); (Sinclair, 2001); (World Bank, 2005); (Carbo, Gardner, & Molyneux, 2005); (Conroy, 2005); (Mohan, 2006); (United Nations Capital Development Fund, 2006)
	Difficulty to “access or use” of essential financial services and products	(Amidzic, Massara, & Mialou, 2014); (Gloukoviezoff, 2004); (European Commission, 2008); (Hanning & Jansen, 2010); (Kempson & Whyley, 1999); (Kempson, Whyley, Casley, & Collard, 2000); (OECD, 2013); (Sarma, 2012)
By principal services and products	Lack of a bank account	(Kempson, Whyley, Casley, & Collard, 2000)
	Lack of access to affordable credit, savings and home contents insurance	(European Commission, 2008); (Hanning & Jansen, 2010)

Kempson et al. (Kempson, Whyley, Casley, & Collard, 2000) recognise that financial exclusion is complex and multi-dimensional and can come about as a result of a range of problems with access, conditions, price, marketing or self-exclusion. In particular, the authors identify “a number of other dimensions of financial exclusion:

1. *access exclusion: the restriction of access through the processes of risk assessment;*
2. *condition exclusion: where the conditions attached to financial products make them inappropriate for the needs of some people;*
3. *price exclusion: where some people can only gain access to financial products at prices they cannot afford;*
4. *marketing exclusion: whereby some people are effectively excluded by targeting marketing and sales;*
5. *self-exclusion: people may decide that there is little point applying for a financial product because they believe they would be refused. Sometimes this is a result of having been refused personally in the past, sometimes because they know someone else who has been refused, or because of a belief that they don’t accept people who live around here”.*

According to Sinclair (Sinclair, 2001), financial exclusion means the inability to access necessary financial services in an appropriate form. Exclusion can be a result of problems with access, conditions, prices, marketing, or self-exclusion in response to negative experiences or perceptions.

Gloukoviezoff (Gloukoviezoff, 2004), on the other hand, finds that “access” is only part of the problem, and that the most significant challenge lies in difficulties in “using” financial services. He defines financial exclusion as the process by which a person encounters such difficulties in accessing or using its banking practices that he/she is no longer able to have a healthy social life in society.

The literature shows several degrees of financial exclusion, depending on the level of complexity of the services used or the use of unofficial suppliers. In particular, the World Bank (World Bank, 2005) distinguishes between “formally served” and “financially served”, and considers “financially excluded” only those who have no kind of access.

Carbo et al. (Carbo, Gardner, & Molyneux, 2005) and Conroy (Conroy, 2005) define financial exclusion as a process that prevents poor and disadvantaged social groups accessing the formal financial system.

According to Mohan (Mohan, 2006) *“financial exclusion signifies the lack of access by certain segments of the society to appropriate, low-cost, fair and safe financial products and services from mainstream providers”*.

The goals of financial inclusion are defined by the United Nations Capital Development Fund (2006) as access for all households to a full range of financial services at a reasonable cost; safe institutions governed by precise regulation; financial and institutional sustainability that ensure certainty of investment; competition to ensure choice and affordability for clients.

The European Commission (European Commission, 2008) defines financial exclusion as *“a process whereby people encounter difficulties accessing or using financial services and products in the mainstream market that are appropriate to their needs and enable them to lead a normal social life in the society in which they belong”*. It distinguishes four forms of financial exclusion: exclusion from essential bank services, exclusion of credit, exclusion from services and savings products, and exclusion from access to insurance and social security services.

According to Hanning & Jansen (Hanning & Jansen, 2010), financial inclusion does not imply that everyone should make use of products and bank services, or that providers should not consider risks and costs when offering services. They argue that *“initiatives should aim to correct market failures and to eliminate nonmarket barriers to accessing a broad range of financial services”*.

Sarma (Sarma, 2012) defines financial inclusion through several dimensions, accessibility, availability and usage of the formal financial system.

Kempson & Collard (Kempson & Collard, 2012), on the other hand, write that *“a financially inclusive society would be one in which everyone had the ability to manage day-to-day financial transactions, meet one-off expenses; manage a loss of earned income; avoid/reduce problem debt”*.

According to the OECD (OECD, 2013) *“financial inclusion refers to the process of promoting affordable, timely and adequate access to a range of regulated financial products and services and*

*broadening their use by all segments of society through the implementation of tailored existing and innovative approaches including financial awareness and education with a view to promoting financial wellbeing as well as economic and social inclusion”.*

World Bank (World Bank, 2013) distinguishes between voluntary versus involuntary exclusion. Voluntary exclusion is a condition where the segment of the population or firms choose not to use financial services either because they have no need for them or for cultural or religious reasons. Involuntary exclusion arises from insufficient income and high-risk profile or because of discrimination and market failures and imperfections. Policy and research initiatives should thus focus on involuntary exclusion, as it can be addressed by appropriate economic programs and policies which can be designed to increase income levels and correct market failures and imperfections.

Amidzic et al. (Amidzic, Massara, & Mialou, 2014) state that financial inclusion is an economic state where individuals and firms are not denied access to essential financial services.

It is essential to note the primary measurements of financial inclusion as used by institutions running surveys collecting key indicators.

In particular, the World Bank identifies the following indicators to measure financial exclusion:

1. Access indicators reflect the depth of outreach of financial services, such as the penetration of bank branches or point of sale (POS) devices in rural areas, and demand-side barriers that customers face to access financial institutions, such as cost or information.
2. Usage indicators measure how clients use financial services, such as the regularity and duration of the financial product/service over time (e.g., average savings balances, number of transactions per account, number of electronic payments made).
3. Quality measures describe whether financial products and services match clients’ needs, the range of options available to customers, and clients’ awareness and understanding of financial products.

The main surveys providing data to measure financial exclusion are shown in Table 2. The literature also focuses on the measurement of financial inclusion (Table 3).

Most studies on financial inclusion use country-level indicators to measure the extent of financial inclusion.

In particular, Honohan (Honohan, 2008) measures financial inclusion by simply measuring the proportion of adult population/households (of an economy) having a bank account. The composite financial access indicator is constructed using household survey data for economies with available data on financial access.

**Table 2 – Surveys on financial exclusion**

Supply-side data		Demand-side data	
IMF Financial Survey Access (FAS)	Penetration and usage of financial services collected	Global Findex	Ownership of accounts; payments; saving, credit, and financial resilience; opportunities for expanding financial inclusion
BankScope	Information on public and private banks; detailed balance sheet by the bank; income statements by bank	Enterprise Surveys (World Bank)	Access to finance; inadequately educated workforce; practices of the informal sector; bribery incidence (per cent of firms experiencing at least one bribe payment request); etc.
IMF-International Financial Statistics (IFS)	GDP growth, inflation, unemployment, payments balances, exports, imports, external debt, capital flows, commodity prices	Living Standards Measurement Study (LSMS)	Access to financial services available; usage of financial services available
IMF Financial Soundness Indicators (FSI)	Financial soundness; strengths of financial systems; vulnerabilities of financial systems	Programme for the improvement of surveys and measurement of living conditions in Latin America and the Caribbean (MECOVI)	Living conditions of people in the region, in terms of scope, coverage, reliability, timeliness and policy relevance
FinStats	Equities; fund prices; currencies, dividends and indices	Financial Diaries	Financial management in poor households

**Table 3 - Resume of literature on measurement – financial exclusion definition**

Indicators	Principal Authors
Indicators that combine both household survey datasets and published financial institution data	<i>Honohan (2008); Rojas-Suarez (2010)</i>
Number of bank A/C per 1,000 population; the number of bank branches; the number of ATMs per 100,000 people; the volume of credit plus deposit relative to the GDP	<i>Chakravarty &amp; Pal (2010); Korynski (2013); Sarma (2008 and 2015)</i>
Number of ATMs per 1,000 square kilometers; the number of branches of Other Depository Corporations (ODCs) per 1,000 square kilometers; the total number of resident household depositors with ODCs per 1,000 adults; the total number of resident household borrowers with ODCs per 1,000 adults	<i>Amidžić, Massara, &amp; Mialou (2014)</i>
Accounts; loans; savings; ATMs per 100,000 people; branches per 100,000 people; ATMs per 1,000 square kilometers; branches per 1,000 square kilometers; distance; affordability; documentation; lack of trust	<i>Camara &amp; Tuesta (2014)</i>

Sarma (Sarma, 2008) investigates macro-level factors that can be associated with financial inclusion. The index of financial inclusion:

- is constructed as a multidimensional index that captures information on various aspects of financial inclusion such as banking penetration (number of bank A/C per 1,000 population), availability of bank services (number of bank branches and number of ATMs per 100,000 people) and usage of the banking system (volume of credit plus deposit relative to the GDP);
- incorporates information on these dimensions in one single number lying between 0 and 1, where 0 denotes complete financial exclusion and 1 indicates complete financial inclusion in an economy.

Mehrotra et al. (Mehrotra, Puhazhendhi, Nair, & Sahoo, 2009) construct an index for financial inclusion using similar aggregate indicators like number of rural offices, number of rural deposit accounts, the volume of rural deposit and credit from banking data for sixteen large states of India. They propose a financial inclusion index that is computed as a weighted arithmetical average of the various dimensions of financial inclusion.

Rojas-Suarez (Rojas-Suarez, 2010) uses the indicator constructed by Honohan (Honohan, 2008) to test the significance of various macroeconomic and country characteristics for a group of emerging economies, including some from developing Asia. The results show that economic volatility, the weak rule of law, higher income inequality, and social underdevelopment and regulatory constraints significantly lower financial access. In addition, various country grouping dummy variables are also found to be significant, especially for large emerging economies.

Chakravarty & Pal (Chakravarty & Pal, 2010) employ the axiomatic measurement approach developed in the human development literature to the measurement of financial inclusion. They improve upon the index of financial inclusion proposed by Sarma (Sarma, 2008) so that the index can be utilised to determine percentage contributions made by various factors.

Kumar & Laha (Kumar & Laha, 2011) identify the underlying factors that are responsible for creating obstacles in the process of financial inclusion in rural West Bengal. In particular, they use a Binary Probit Regression Model and identify the higher degree of awareness of essential bank services, diversification in the rural non-farm sector, literacy drive to rural households and an expansion of household-level assets as factors crucial to create an enabling environment which reduces obstacles to financial inclusion.

Singh & Kondan (Singh & Kondan, 2012) identify factors associated with financial inclusion with the help of Regression Analysis and find that financial inclusion is significantly positively associated with socio-economic development. They find that per capita net state domestic product (NSDP) and urbanization are significant predictors of financial inclusion, while literacy, employment and sex-ratio are not statistically significant predictors.

Likewise, Johnson & Nino-Zarazua (Johnson & Nino-Zarazua, 2011) examine the patterns of access and socio-economic, geographic and demographic variables associated with access to finance in Kenya and Uganda. They find that age, employment, education and gender are key factors

explaining access to formal financial services, and also show that an informal financial sector contributes substantially to access to finance.

Korynski (Korynski, 2013) uses Sarma's methodology to calculate the financial inclusion score for Belarus and proposes several versions of the index with different weights for each dimension.

Kumar (Kumar, 2013) evaluates the determinants of financial inclusion in India and shows that branch density, the level of industrialization and the prevalence of an employee base have a beneficial impact on financial inclusion. He uses several branches, number of credit accounts, credit amounts outstanding, number of deposit accounts, deposit amount, number of factories, population, and employment.

Amidzic et al. (Amidzic, Massara, & Mialou, 2014) construct a financial inclusion index as a composite index of variables pertaining to dimension, outreach (geographic and demographic penetration), usage (deposit and lending), and quality (disclosure requirement, dispute resolution, and cost of usage).

Camara & Tuesta (Camara & Tuesta, 2014) use a principal component analysis (PCA) and find that access and usage are both necessary but not sufficient conditions for measuring the inclusiveness of a financial system. They show that focus on usage and access to the detriment of other factors leads to limited measurement of financial inclusion. They find that the degree of financial inclusion is determined by three parameters: usage (people who have a bank account, people who use mobile banking services but do not have an account, and people who have a credit or debit card but do not have an account), barriers (distance, lack of the necessary documentation, affordability and lack of trust in the formal financial system) and access (ATMs, commercial bank branches).

Demirgüç-Kunt et al. (Demirgüç-Kunt, Klapper, & Singer, 2015) measure financial inclusion on the basis of 3 parameters: level of credit institution outreach (number of branches per square kilometre, the number of ATM per square kilometre, the number of branches per one thousand individuals), level of usage of financial products and services (percentages of loans and deposit account in the population, number of transactions per deposit account, number of electronic payments), and quality of the products and services (cost of usage, level of financial literacy).

Sarma (Sarma, 2015) proposes a measure of inclusiveness of a financial system that incorporates information on various aspects of financial inclusion, including banking penetration, availability and usage.

Finaccess (Finaccess, 2016) provides a measurement of financial inclusion (access, usage, quality and impact) in Kenya. Measures include a level of formality (access strand), choice of institution (e.g. bank, informal group, SACCOs) and functionality (e.g., savings, credit and insurance).

Sathyan & Panda (Sathyan & Panda, 2016) analyse the determinants of financial inclusion in India during the post-reform period using a multiple regression model. They suggest that financial inclusion is determined by factors such as the number of bank branches, population dependency per branch, and industry concentration in the state, while socioeconomic factors like per-capita income of the state, literacy rates, and urbanization are not significant factors.



Ampudia & Ehrman (Ampudia & Ehrman, 2017) study the determinants of being “unbanked” in the euro area and the United States. The document that low-income households, unemployed households and those with poor education are the most likely to be affected, and significantly more so in the United States than in the euro area.

### Social Inclusion

Social inclusion (or social exclusion) figured prominently in policy discourse in France in the mid-1970s, partly in response to massive economic restructuring that began to affect labour markets, social policies, poverty and migration flow.

The concept was also used in other industrialised countries and was adopted by the EU in the late 1980s as a key concept in social policy. In many instances, it replaced the concept of poverty.

The EU defines social exclusion as a process through which people are wholly or partially excluded from full participation in the society in which they live (Deakin, Thomas, & Davis, 1995).

Social inclusion is a priority item of the European Agenda 2020 which aims to ensure economic, social, and territorial cohesion by guaranteeing respect for the fundamental rights of people experiencing social exclusion so that they can live in dignity and take an active part in society.

The EU - Directorate General for Employment and Social Affairs (European Union, 2004) defines social inclusion and social exclusion as follows:

- *“Social inclusion is a process which ensures that those at risk of poverty and social exclusion gain the opportunities and resources necessary to participate fully in economic, social and cultural life and to enjoy a standard of living and well-being that is considered normal in the society in which they live. It ensures that they have greater participation in decision making which affects their lives and access to their fundamental rights”.*

- *“Social exclusion is a process whereby certain individuals are pushed to the edge of society and prevented from participating fully by virtue of their poverty, or lack of basic competencies and lifelong learning opportunities, or as a result of discrimination. This distances them from job, income and education opportunities as well as social and community networks and activities. They have limited access to power and decision-making bodies and thus often feeling powerless and unable to take control over the decisions that affect their day to day lives”.*

A 2011 European Commission report (European Commission, 2011) focuses on social inclusion and poverty reduction and defines three indicators that reflect the multiple facets of poverty and exclusion across Europe. These are the at-risk-of-poverty rate, severe material deprivation and people living in households with very low work intensity.

Social inclusion is a multidimensional phenomenon that involves social, psychological, political, and economic aspects of an individual’s life (Atkinson, Cantillon, Marlier, & Nolan, 2002); (Bossert, D’Ambrosio, & Peragine, 2007); (Chakravarty & D’Ambrosio, 2006). The literature is diverse and extensive, and there are numerous definitions of social exclusion and social inclusion (Table 4).

The definitions of social inclusion and social exclusion vary significantly depending on the context, and have continually evolved over time.

In fact, a variety of terms are used interchangeably in both research and policy documents, including solidarity, integration, cohesion, and social capital (Beck, Demirguc-Kunt, Laeven, & Levine, 2008); (Beauvais & Jenson, 2002); (Berger, 1998); (Bernard, 1999); (Brunkhorst, 2005); (Daly & Silver, 2008); (Kymlicka, 2010); (Putnam, 2007); (Silver, 1994). For example, Goodin (Goodin, 1996) considers participation as the antidote to social exclusion, while Woodward & Kohli (Woodward & Kohli, 2001) show that social inclusion is located in a theoretical context of social integration and institutions of social membership.

**Table 4 - Resume of literature on social exclusion / inclusion definition**

	Definition	Principal Authors
By concept	Social inclusion	Atkinson & Marlier (2010); Dugarova (2015); European Union (2004); Frazer & Marlier (2014); Hall (2010); Quinn and Doyle (2012); Simplican, Leader, Kosciulek, & Leahy (2015); Walker, Calkins, Wehmeyer, Walke, Bacon, & Palmer (2011); World Bank (2013)
	Social exclusion	Burchardt, Le Grand, & Piachaud (1999); Deakin, Thomas, & Davis (1995); European Union (2004); Hickey & du Toit (2007)
	Poverty and exclusion	Daly (2006); European Commission (2011); Ghosh (2010); Hall (2009); Toye & Infanti (2004)
By principal elements in the definition	Solidarity, integration, cohesion, social capital, belonging	Beauvais & Jenson (2002); Berger (1998); Bernard (1999); Brunkhorst (2005); Daly & Silver (2008); Dugarova & Lavers (2014); Goodin (1996); Kymlicka (2010); Power (2013); Putnam (2007); Silver (1994); Silver (2015); United Nations (1995); Reichrath, de Witte, & Verdonshot (2009); Woodward & Kohli (2001)
	Multidimensional phenomenon	Atkinson, Cantillon, Marlier, & Nolan (2002); Bossert, D'Ambrosio, & Peragine (2007); Chakravarty & D'Ambrosio (2006); Duggan & Linehan (2013); Hospes & Clancy (2011)

The UN (United Nations) stresses the connection of social inclusion to social integration or social cohesion, presenting a vision for *"a society for all, in which every individual, each with rights and responsibilities, has an active role to play"*.

According to Burchardt et al. (Burchardt, Le Grand, & Piachaud, 1999), social exclusion is associated with failures in achieving a reasonable living standard, a degree of security, and activity valued by others, some decision-making power, and the possibility of drawing support from relatives and friends.

Toye & Infanti (Toye & Infanti, 2004) find that social inclusion is about a strategy for change and a vision for improving people's conditions.

Daly (Daly, 2006) also notes that social inclusion is often discussed interchangeably with social exclusion without any systematic working out of why inclusion should be the solution to exclusion.

According to Hickey & du Toit (Hickey & du Toit, 2007), the concept of social exclusion is used in industrialised countries to describe the processes of marginalization and deprivation which can arise

where processes of economic and social transformation render “traditional” systems of welfare and social protection inadequate or obsolete. Social exclusion is not coterminous with poverty (i.e. it is possible to be “excluded” without being poor), but many poor people are “excluded”, and paying attention to exclusion allows a broader view of deprivation and disadvantage than the somewhat narrower concept of “poverty”.

Focusing on people with severe and profound intellectual disability, Clement & Bigby (Clement & Bigby, 2009) follow a narrow definition of social inclusion when they aim to “*expand people’s social networks by facilitating relationships with people who are not staff members, relatives, or people with intellectual disabilities*”. They narrow the scope in two ways: first, they exclude relationships with specific groups (staff, families, and people with ID), and second, they discount community activities as a component of social inclusion, although they presume that relationships with community members would encompass community involvement.

Reichrath et al. (Reichrath, de Witte, & Verdonschot, 2009) find that social inclusion can become interchangeable with social capital when the definition of social inclusion includes benefits like increased trust, reciprocity, and personal efficacy that may result from social networks and community involvement.

Social inclusion has also been defined as the endpoint for overcoming social exclusion, where social exclusion is characterised by the “*involuntary exclusion of individuals and groups from society’s political, economic and societal processes, which prevents their full participation in the society in which they live*” (Atkinson & Marlier, 2010).

Hall (Hall, 2010) shows that when definitions of social inclusion encompass subjective feelings of belonging, value, and acceptance, then social inclusion becomes interchangeable with a sense of belonging. So, he argues that social inclusion without a sense of belonging misses the fact that social inclusion in mainstream settings may decrease a person’s quality of life.

In the same year, Ghosh (Ghosh, 2010) shows that poverty reduction does not automatically lead to social inclusion, as has been in the case in large emerging countries such as China and India, where poverty has drastically fallen in recent years while inequalities and exclusion of some groups have increased.

Hospes & Clancy (Hospes & Clancy, 2011) show that many impoverished and exploited people can be considered include, but on highly conflicting terms, and therefore social inclusion may not be automatically beneficial or necessary for the poor.

A particular definition is proposed by Walker et al. (Walker, Calkins, Wehmeyer, Walke, Bacon, & Palmer 2011). They explain the social inclusion of certain groups as “*societal acceptance of people with disabilities within school, work, and community settings*”.

Similarly, Cobigo et al. (Cobigo, Ouellette-Kuntz, Lysaght, & Martin 2012) define social inclusion of communities where individuals must have a sense of belonging to a social network, have experience with a valued social role, and must be trusted to perform that social role in the community.

Quinn & Doyle (Quinn & Doyle, 2012) argue that *“independent living and social inclusion are interrelated and that the Convention on the Rights of Persons with Disabilities promotes independent living through the enhancing of social connectedness”*.

A clear definition of social inclusion can help standardise the multiple ways that researchers measure social inclusion (Amado, Novak Stancliffe, & McCarren, 2013), while Duggan & Linehan (Duggan & Linehan, 2013) argue that the concept of social inclusion has become interchangeable with independent living.

According to Frazer & Marlier (Frazer & Marlier, 2014), social inclusion has been defined as a process in which those at risk of poverty and social exclusion gain the opportunities and resources that are needed to participate in societal activities fully. In this process, adequate income and employment have been treated as key means to tackle social exclusion, poverty and inequality.

Power (Power, 2013) tries to explain social inclusion with regard to the concept of belonging. Notably, he argued that belonging does not solely involve being placed within an environment but fitting in within a specified place or environment.

According to the World Bank (World Bank, 2013), social inclusion has also been seen as a foundation for shared prosperity that characterises the process of improving abilities, opportunities and dignity of the disadvantaged through access to markets, services and spaces.

The World Bank Group defines social inclusion as:

1. the process of improving the terms for individuals and groups to take part in society;
2. the process of improving the ability, opportunity, and dignity of those disadvantaged on the basis of their identity to take part in society.

According to Dugarova & Lavers (Dugarova & Lavers, 2014), social policy should be concerned not only with the welfare and rights of an individual but also with supporting social relations, institutions and structures through which the welfare of individuals in their households, communities and nations could be maintained and enhanced while recognizing the importance of societal levels of analysis and not simply economic or individual indicators.

Dugarova (Dugarova, 2015) considers social inclusion a goal (to achieve an inclusive society), a process (to enable persons' participation in decision-making activities that affect their lives), and an outcome (to ensure the reduction of inequalities, and of any forms of discrimination).

A study by Simplican et al. (Simplican, Leader, Kosciulek, & Leahy, 2015) lists definitions of social inclusion found in the literature in the last ten years. They define social inclusion as the interaction between two major life domains or the interpersonal relationships and community participation. These two concepts emerge as common themes, but conceptual differences emerge around the scope, setting, and depth of social inclusion. They propose an ecological model of social inclusion that includes individual, interpersonal, organizational, community, and socio-political factors. They identify four areas of research: organizational implementation of social inclusion; social inclusion of people with intellectual and developmental disabilities living with their families; social inclusion of

people along a broader spectrum of disability; the potential role of self-advocacy organizations in promoting social inclusion.

Silver (Silver, 2015) shows that social inclusion may involve a process of encouraging social interaction between people with different socially relevant attributes and demonstrates how contexts influence processes of economic, social, and political exclusion and inclusion.

There are various measurements of social exclusion used by different institutions. Table 5 shows examples.

**Table 5 - Resume on measurements – social exclusion / inclusion definition**

Definition	Principal Authors
Financial capital, physical capital, human capital, social capital	World Bank (2007)
The choice of indicators depends on the country context and on the purpose for which the indicators are to be employed.	United Nations (2010)
At-risk-of poverty rate, material deprivation, exclusion of labour market component	Eurostat (2013)

In particular, a 2007 World Bank study (2007) contributes to the on-going dialogue on social inclusion in the new Member States of Europe, by furthering analysis on the dimensions of exclusion and the policy instruments for supporting inclusion. It used the definitions of social inclusion and social exclusion given by the European Union (2004) and adopted as part of the EU's Lisbon process, in order to ensure consistency in terminology and with the EU28 objectives. The World Bank study (2007) derives an approach to quantifying the determinants of social exclusion in order to complement the analysis of poverty. The framework has at its centre the concept of capability deprivation, which says that due to social and economic factors, specific individuals in society may never reach their full potential. Four forms of capital are measured that can affect an individual's wellbeing, economic fortunes, poverty and inclusion. These forms are financial, physical, capital, and social capital.

The UN demonstrates the analytical and operational relevance of the measurement of poverty and social exclusion, describing how such measures could be put in place, and how there are different important dimensions of social exclusion, which encompasses a broader (complex and multi-dimensional) set of concerns. In this study (United Nations, 2010), social exclusion is defined as the involuntary exclusion of individuals and groups from society's political, economic and societal processes, which prevents their full participation in the society in which they live. But the UN study does not identify a single set of indicators: the choice of indicators depends on the country context and on the purpose for which the indicators are to be used.

A Eurostat study (Eurostat, 2013) on the measurement of poverty and social inclusion in Europe reports that different indicators exist to measure social inclusion, including poverty, material deprivation and exclusion from the labour market, etc. In particular, the EU is not at all homogeneous and particular indicators do not match needs and situations of all countries.

Numerous authors are also involved in studying the measurement of social exclusion (Table 6).

As noted above, social exclusion is a complex concept that encompasses interlinked problems and affects people or areas. In fact, people can be socially excluded, for example, by poverty, or by age or disability, even if they live in prosperous communities.

To summarise, there are different approaches to measuring social exclusion. Most approaches focus on people rather than geographic areas and some attempt to include measures that take account of people's societal exclusion or isolation.

**Table 6 - Resume of literature on measurement – social exclusion / inclusion definition**

Indicators	Principal Authors
<b>Primary indicators</b>	
At-risk-of-poverty rate after social transfers, inequality of income distribution, persistent risk-of poverty rate, relative median at risk- of-poverty gap, regional cohesion, long term unemployment rate, persons living in jobless households, early school leavers not in education or training, life expectancy at birth, self-defined health status by income level	Atkinson, B., Nolan, & Marlier (2004)
<b>Secondary indicators</b>	
At-risk-of-poverty rate anchored at a moment in time, at risk-of-poverty rate before social transfers, Gini coefficient, persistent risk-of poverty rate, long term unemployment share, very long term unemployment rate persons with low educational attainment	
Financial difficulties, basic necessities, housing conditions, durables, health, social contact, dissatisfaction	Chakravarty & D'Ambrosio (2006)
Impoverishment (or exclusion from adequate resources or income), labour market exclusion, service exclusion, exclusion from social relations	Levitas (2006)
Employment and work, income and economic resources, material resources, education and skills, health, housing, social resources, community resources, and personal safety	Labonté, Hadi, & Kauffmann (2011)
Economic dimension, social dimension, political dimension	Silver (2015)

The analysis of social exclusion typically quantifies different dimensions beyond income poverty, including access to financial, physical, human and social capital. The concept can be used in multisectoral policy approaches that may not emerge through a focus solely on income or consumption-based poverty measures. In fact, being poor can lead to exclusion, but exclusion is more than just being poor, it is about participation in social and economic interactions.

While income poverty and social exclusion overlap, they do not necessarily intersect. One can be socially excluded without being poor (Atkinson, 1998).

Some authors show that dimensions of exclusion are not necessarily related; their association also varies across national contexts (Muffels & Fouarge, 2001); (Pantazis, Gordon, & Levitas, 2006); (Tsakloglou & Papadopoulos, 2002).

Another paper by Atkinson et al. (Atkinson, Nolan, & Marlier, 2004) reviews the scientific and political basis on which the indicators were selected and the implications for the future development of policy-making in Europe. It describes the key features of the indicators and some of the ways in which they can be developed. It investigates various important issues that need to be addressed when setting quantitative targets in the context of the social inclusion process.

An important study on the measurement of social exclusion by Levitas (Levitas, 2006) highlights that the most important indicators to be used depend on the view of the nature of social exclusion and its causal connection to poverty. Indicators may also be found to reflect the fabric of social life, but the indicators agreed at the European level are over-concentrated on employment and poverty.

Chakravarty & D'Ambrosio (Chakravarty & D'Ambrosio, 2006) develop an axiomatic approach to the measurement of social exclusion. At an individual level, social exclusion is viewed in terms of deprivation of the person with regard to different functioning in society. At the aggregate level, social exclusion is considered as a function of individual exclusion.

The study by Noya & Clarence (Noya & Clarence, 2008) demonstrates that the indicators of social exclusion are based not only on poverty but also on a number of other indicators such as unemployment, income, educational attainment, housing, financial exclusion and a lack of financial assets, health and mobility.

Marlier & Atkinson (Marlier & Atkinson, 2010) argue based on EU experience for a principle-based approach and explore the possible architecture of indicators of poverty and social exclusion in a multinational context. They consider the implementation of a set of indicators and their contribution to the policy process.

Labonté et al. (Labonté, Hadi, & Kauffmann, 2011) provide a review of the literature on social exclusion. Their review of models, indicators and measures identifies nine domains that capture processes of social exclusion/inclusion. These domains are employment and work, income and economic resources, material resources, education and skills, health, housing, social resources, community resources, and personal safety.

Silver (Silver, 2015) also highlights that different histories, cultures, institutions and social structures in different places make some dimensions of social exclusion (economic, social, political) more salient and vital than others.

### 3 The literature on the determinants of financial sector development

The literature on the determinants of financial sector development considers a variety of macroeconomic and institutional factors, but there is no single overall view summarizing the model in a single framework.

The financial sector is usually observed at the overall level of economic development, social and economic stability, the political and legal framework, and economic opening up, while at the marginal level each of these categories are difficult to isolate. They are interconnected and causality with the level of financial development is a complex phenomenon.

The economic literature studies the link between the activity of the financial sector and economic growth and the link between financial sector development and poverty reduction (Aghion & Hewitt, 2005); (Beck, Demiguc-Kunt, Laeven, & Levine, 2008); (Perez-Moreno, 2011); (Rajan & Zingales, 2003); (Seharawat & Giri, 2015). In fact, the financial sector is considered to be a crucial factor in that it allocates resources and mobilises savings and exchange of goods and services. In this sense, the financial sector facilitates economic growth directly through widening access to finance, and indirectly through growth and contributing to the reduction of poverty.

Regarding the link with economic growth, there are two approaches: macroeconomic cross-country studies, and microeconomic studies based on sectoral and business data.

As regards the macroeconomic approach, some studies, carried out on a large number of countries, show convincingly that there is a causal link between the development of the financial system and the growth rate of the economy (Beck, 2000).

The microeconomic approach also confirms the close link between finance and growth within individual countries. These studies show that liberalization in the opening of bank branches is associated with higher rates of income and product growth (Jayaratne & Strahan, 1996).

Most of these studies use different indicators associated with the level of financial sector development in order to investigate the nexus between the financial system and economic growth.

The main literature presents various indicators used to measure the level of financial sector development, as reported in Table 7.

**Table 7 – Resume of literature on determinants of financial development**

<b>Indicators</b>	<b>Principal Authors</b>
The ratio of liquid liabilities and GDP	Ergungor (2008); Goldsmith (1969); McKinnon (1973)
The ratio of deposits to GDP	Gertler & Rose (1994); King & Levine (1993)
Presence of bank branches compared to the population or the presence of local banks	Burgess & Pande (2005); Ferri & Mattesini (1997)
Relationship between domestic credit and GDP	Rajan & Zingales, 1998
Loans share disbursed to the private sector or credits granted to the private sector compared to GDP	Beck, Demiguc-Kunt, & Levine (2007); Dehejia & Gatti (2002); Honohan (2004); Levine (1997 and 2003); Levine, Loayza, & Beck (2002)



Two groups of commonly used indicators can be distinguished.

The first group of indicators show the occurrence and spread of the banking sector and reflect the ratio of liquid liabilities (deposits and advances to customers and rates of interest which banks and other financial institutions have an obligation to pay) to GDP, the ratio of deposits to GDP, and the presence of bank branches compared to the population or the presence of local banks (Ergungor, 2008); (Ferri & Mattesini, 1997); (Gertler & Rose, 1994); (Goldsmith, 1969); (King & Levine, 1993); (McKinnon, 1973).

In particular, Goldsmith and McKinnon (Goldsmith, 1969; McKinnon, 1973) use the size of the formal financial intermediary sector relative to economic activity to measure financial sector development or financial depth.

King & Levine (King & Levine, 1993) show that “one measure of financial depth equals the ratio of liquid liabilities of the financial system to GDP. Liquid liabilities consist of currency held outside the banking system plus demand and interest-bearing liabilities of banks and nonbank financial intermediaries”. They construct three further indicators of financial development: the ratio of commercial bank domestic credit to the sum of commercial bank domestic credit and central bank domestic credit, which measures the relative importance of specific financial institutions, the ratio of credit on the non-financial private sectors to domestic credit, and the ratio of credit issued to the private sector to GDP.

Similarly, Ergungor (Ergungor, 2008) uses, among others, two indicators to “measure the activity of stock markets and banks (it equals the logarithm of the value of domestic equities traded on domestic exchanges divided by GDP times the value of bank credits to the private sector divided by GDP) and measure the activity of stock markets relative to that of banks (it equals the logarithm of the value of domestic equities traded on domestic exchanges divided by the value of deposit money bank credits to the private sector)”.

The second group of indicators measures the amount of financial intermediation by banks and regards the relationship between domestic credit and GDP, and the loans share disbursed to the private sector or credits granted to the private sector compared to GDP (Levine, 1997); (Levine, 2003); (Levine, Loayza, & Beck, 2002); (Rajan & Zingales, 1998).

Among these variables, Rajan & Zingales (Rajan & Zingales, 1998) consider, for example, the ratio between domestic credit plus stock market capitalization and GDP and the accounting standards in a country that reflect the potential for obtaining finance rather than the actual finance raised.

The World Bank (World Bank, 2006) created the Financial Sector Development Indicators (FSDI), which go beyond size and can help assess access, efficiency and stability of financial systems.

With regard to causality between financial development and poverty reduction, various studies show that greater territorial penetration of branches, and the associated higher efficiency, can lead to a significant reduction in the income distribution disparity. In fact, the most important channel through which the financial sector impacts on poverty is improved access to financial services.

For example, Burgess & Pande (Burgess & Pande, 2005) show that in India, branch expansion led to rural poverty reduction through an increase in non-agricultural activities and manufacturing activities.

As a proxy for the absence of credit constraints, Dehejia & Gatti (Dehejia & Gatti, 2002) use the ratio of private credit (the value of credit by financial intermediaries to the private sector) to GDP. This variable isolates the credit granted to the private sector (compared to credit granted to governments and public companies) and captures the degree of activity of financial intermediaries. Dehejia & Gatti (Dehejia & Gatti, 2002) show that an increase in access to credit reduces the extent of child labour.

Honohan (Honohan, 2004) shows that an increase in the ratio of private credit issued by deposit-money banks to GDP would lead to a reduction in poverty incidence. He suggests that a direct relationship between financial development and poverty reduction exists, and this relationship is independent of the indirect effect through growth.

Beck et al. (Beck, Demirguc-Kunt, Laeven, & Levine, 2008) also use private credit divided by GDP to measure financial development. They show that financial development leads the incomes of the poor to grow faster than the average per capita GDP growth.

## 4 Data and methodology

The present research is conducted through the collection and elaboration of data representing financial and social inclusion and financial sector development and published by different sources in the period 2016-2017.

A database on key indicators measuring financial and social inclusion in European countries in the period 2016-2017 is built. Data are extrapolated from several sources; Global Findex Database, IMF - Financial Access Survey, ECB HFCS - Household Finance and Consumption Survey, and EU-Statistics on Income and Living Conditions (EU-SILC).

Financial inclusion is determined considering three different dimensions: usage, access, and barriers (Table 8). In fact, an inclusive financial system can be defined as “one that maximises usage and access, while minimizing involuntary financial exclusion. Involuntary financial exclusion is measured by a set of barriers perceived by those individuals who do not participate in the formal financial system” (Camara & Tuesta, 2014). Each of these dimensions is determined by several demand-side individual-level indicators for usage and barrier, and supply-side country-level indicators for access. For example, the proportion of people having a bank account is a measure of the penetration of the banking system, while the data on the number of bank branches and the number of ATMs per 100,000 adults are a measure of the availability dimension (Sarma, 2015). Furthermore, the percentages of loans and deposit accounts in the population, the number of transactions per deposit account and the number of electronic payments show the level of usage of financial products and services (Demirgüç-Kunt, Klapper, & Singer, 2015).

Social inclusion is defined on the basis of three indicators (the at-risk-of-poverty rate, people living in households with very low work intensity, and severe material deprivation) which according to the

**Table 8 – Indicators to measure financial inclusion**

Use			Access		Barriers	
Indicator	Source		Indicator	Source	Indicator	Source
Account	Global Database	Findex	ATMs per 1,000 km <sup>2</sup>	IMF, Financial Access Survey	Not applying for credit	ECB HFCS
Borrowed from family or friends	Global Database	Findex	ATM per 100,000 adults	IMF, Financial Access Survey	Refused or reduced credit	ECB HFCS
Borrowed from a financial institution	Global Database	Findex	Branches per 1,000 km <sup>2</sup>	IMF, Financial Access Survey	Credit constrained	ECB HFCS
Saved	Global Database	Findex	Branches per 100,000 adults	IMF, Financial Access Survey		
The main source of emergency funds: loan from a bank, employer, or private lender	Global Database	Findex				
The main source of emergency funds: family or friends	Global Database	Findex				
Deposit % with a financial institution account	Global Database	Findex				
No deposit and no withdrawal from a financial institution account	Global Database	Findex				
Credit card	Global Database	Findex				
Debit card	Global Database	Findex				
Internet	Global Database	Findex				
Account to receive wages	Global Database	Findex				
N° transactions per inhabitant	ECB HFCS					

European Commission (European Commission, 2011) reflects the multiple facets of poverty and exclusion across Europe (Table 9).

As we see in the literature, each of these dimensions represents a particular economic or familiar difficulty that is supposed to lead individuals to be not only destitute but also excluded from a series of social schemes or not able to conduct a lifestyle that is consistent with the social community.

The first indicator, i.e. at-risk-of-poverty rate, indicates people whose disposable income is below 60% of the median income of their country. It is a relative measure of poverty, which takes account of all sources of monetary income.

The second indicator, i.e. share of people living in households with very low work intensity, indicates people who live in households where nobody works, but who are not necessarily living on a very low income.

The third indicator, i.e. the material deprivation rate, indicates people who cannot afford a number of necessities considered essential for a decent life.

**Table 9 - Indicators to measure social inclusion**

At-risk-of poverty rate		People living in households with very low work intensity		Material deprivation	
Indicator	Source	Indicator	Source	Indicator	Source
People at risk of poverty or social exclusion	EU SILC	People living in households with very low work intensity	EU SILC	Severely materially deprived people	EU SILC
People at risk of poverty after social transfers	EU SILC				

A database on key indicators measuring financial sector development in European countries in the period 2016-2017 is built. Data are extrapolated from several sources; IMF - Financial Access Survey, and ECB - Household Finance and Consumption Survey.

Financial sector development is determined considering the demand side and the supply side (IMF - Financial Access Survey), as well as potential demand development (ECB - Household Finance and Consumption Survey) (Table 10).

Measures of financial sector development include data on the volume of credit to the private sector and deposit mobilised from the private sector as a proportion of the country's GDP (Sarma, 2015), the presence of bank branches compared to the population or the presence of banks (Ergungor, 2008) and the intermediation degree, i.e. private credit to deposit (World Bank, 2006).

On the demand side, we thus used data on banking activity (loans and deposits, number of borrowers and depositors), and on the supply side, data on the structure of the banking system (ATM, branches, institutions). For potential growth of demand, we used data on credit from the last three years and the degree of intermediation expressed by the relationship between outstanding loans and outstanding deposits.

**Table 10 - Indicators to measure financial sector development**

Demand		Supply		Potential Development	Demand
Indicator	Source	Indicator	Source	Indicator	Source
Outstanding loans with commercial banks	IMF, Financial Access Survey	Institutions	IMF, Financial Access Survey	Applied for credit	ECB HFCS
Outstanding deposits with commercial banks	IMF, Financial Access Survey	ATMs per 1,000 km <sup>2</sup>	IMF, Financial Access Survey	The ratio of loans on deposits (Degree of intermediation)	IMF, Financial Access Survey (our processing)
Outstanding loans in % GDP	IMF, Financial Access Survey	ATMs per 100,000 adults	IMF, Financial Access Survey		
Outstanding deposits % GDP	IMF, Financial Access Survey	Branches per 1,000 km <sup>2</sup>	IMF, Financial Access Survey		
Number Borrowers	IMF, Financial Access Survey	Branches per 100,000 adults	IMF, Financial Access Survey		
Number Depositors	IMF, Financial Access Survey				

## 5 Multivariate statistical analysis

### Principal Component Analysis

As briefly described in the previous section, an initial set of 33 indicators for the EU28 countries was identified describing the following three aspects: financial inclusion (20 indicators), social inclusion (4 indicators) and financial sector development (9 indicators). Indicators showing missing values (Not applying for credit; Refused or reduced credit; Credit constrained; Outstanding loans with commercial banks; Outstanding deposits with commercial banks; Number of Borrowers; Number of Depositors; Applied for credit) are removed from the set. Furthermore, because the number of ATMs and Branches per 100,000 adults identifies the wider level of access to the financial system, they are used as indicators only of the degree of supply development in the financial sector. The final set of indicators thus numbered 23.

The input of subsequent analysis was a 28x23 data matrix showing

- **Thirteen indicators of financial inclusion:**

X1 = Account

X2 = Main source of emergency funds: loan from a bank, employer, or private lender

X3 = Main source of emergency funds: family or friends

X4 = % Deposit with a financial institution account

X5 = No deposit and no withdrawal from a financial institution account

X6 = Borrowed from family or friends

X7 = Borrowed from a financial institution

X8 = Saved

X9 = Credit card

X10 = Debit card

X11 = Internet

X12 = Account to receive wages

X13 = No. transactions per inhabitant

- **Four indicators of social inclusion:**

Y1 = People at risk of poverty or social exclusion

Y2 = People at risk of poverty after social transfers

Y3 = People living in households with very low work intensity

Y4 = Severely materially deprived people

- **Six indicators of the financial sector:**

Z1 = Outstanding loans with commercial banks

Z2 = Outstanding deposits with commercial banks

Z3 = Ratio of loans on deposits (Intermediation Degree)

Z4 = Branches per 100,000 adults

Z5 = Institutions

Z6 = ATM per 100.000 adults

The correlation matrix shows a high pairwise correlation between the indicators, mostly between the ones describing the same aspect. For example, the correlation between X1 and X10 is almost 0.90, and between X3 and X10 it is almost 0.80. The correlation between Y1 and Y4 exceeds 0.90, while the correlation between Z1 and Z2 is just below 0.90. This, together with the need to reduce the number of indicators to facilitate the interpretation of the subsequent classification, suggests it may be useful to preliminarily carry out principal components analysis (PCA) in order to obtain a new set of uncorrelated variables and to reduce the dimensionality of the input features (23 initially). The first extracted components will be used as inputs to a subsequent classification tool.

The PCA was carried out separately for the three investigated aspects (financial inclusion, social inclusion, development of the financial system), and the results are described below.

For financial inclusion (Table 11a), the first component shows a high share of the total variance (about 55%) and can be described as "Formal Financial Inclusion" as it is positively related mainly to use indicators, including the percentage of respondents who report:

- having an account at a bank or other type of financial institution,
- saving or setting aside any money at a bank or other type of financial institution,
- having a debit card and credit card,
- using the internet to pay bills and,
- receiving any money from an employer directly into a financial institution account or into a card (Table 11a).

As expected, the others indicators (such as the percentage of respondents who cite family, relatives, or friends as their main source of money, and the percentage of respondents who report borrowing any money from family, relatives, or friends) are negatively related to the first component.

As regards the PCA of the second set of indicators (Table 11b), the first component explains a significant share of the total variance (69%) and can be identified as a summary measure of "Social Inclusion" as it is linked to the following indicators: people at risk of poverty or social exclusion, people at risk of poverty after social transfers, severely materially deprived people.

**Table 11 – Principal Component Analysis**

<b>Component Matrix</b>			
(a)		<b>Component</b>	
		<b>1</b>	
	X <sub>1</sub> = Account	0.819	
	X <sub>2</sub> = Main source of emergency funds: loan from a bank, employer, or private lender	0.411	
	X <sub>3</sub> = Main source of emergency funds: family or friends	-0.838	
	X <sub>4</sub> = Deposit % with a financial institution account	0.635	
	X <sub>5</sub> = No deposit and no withdrawal from a financial institution account	-0.638	
	X <sub>6</sub> = Borrowed from family or friends	-0.536	
	X <sub>7</sub> = Borrowed from a financial institution	0.681	
	X <sub>8</sub> = Saved	0.918	
	X <sub>9</sub> = Credit card	0.774	
	X <sub>10</sub> = Debit card	0.881	
	X <sub>11</sub> = Internet	0.914	
	X <sub>12</sub> = Account to receive wages	0.870	
	X <sub>13</sub> = N° transactions per inhabitant	0.400	
<b>Component Matrix</b>			
(b)		<b>Component</b>	
		<b>1</b>	
	Y <sub>1</sub> = People at risk of poverty or social exclusion	0.993	
	Y <sub>2</sub> = People at risk of poverty after social transfers	0.878	
	Y <sub>3</sub> = People living in households with very low work intensity	0.449	
	Y <sub>4</sub> = Severely materially deprived people	0.896	
<b>Component Matrix</b>			
(c)		<b>Components</b>	
		<b>1</b>	<b>2</b>
	Z <sub>1</sub> = Outstanding loans with commercial banks	0.895	-0.419
	Z <sub>2</sub> = Outstanding deposits with commercial banks	0.875	-0.165
	Z <sub>3</sub> = Ratio of loans on deposits (Intermediation Degree)	0.545	-0.680
	Z <sub>4</sub> = Branches per 100,000 adults	0.565	0.455
	Z <sub>5</sub> = Institutions	0.475	0.557
	Z <sub>6</sub> = ATM	0.544	0.678

Finally, with reference to the development of the financial markets (Table 11c), the first two components explain about 73% of the total variance. The first one (45% of the variance) can be described as "Mainstream Financial Activity" and is linked to the indicators that:

- denote the total amount of all types of outstanding loans of resident nonfinancial corporations (public and private) and households with commercial banks, calculated as (outstanding loans with commercial banks)\*100/ GDP;



- denote the total amount of all types of outstanding deposits of resident nonfinancial corporations (public and private) and households with commercial banks, calculated as (outstanding deposits with commercial banks) \*100/ GDP (Table 11c).

The second component (28% of the total variance) is identified as "Potential Financial Sector Development" and is linked to intermediation degree and to the number of Institutions and ATMs of commercial banks per 100,000 adults (Table 11c).

The score matrix of the four principal components was the input data in order to obtain a classification of the EU28 countries:

C1 = Formal Financial Inclusion

C2 = Social Inclusion

C3 = Mainstream Financial Activity

C4 = Potential Financial Sector Development

### Cluster Analysis

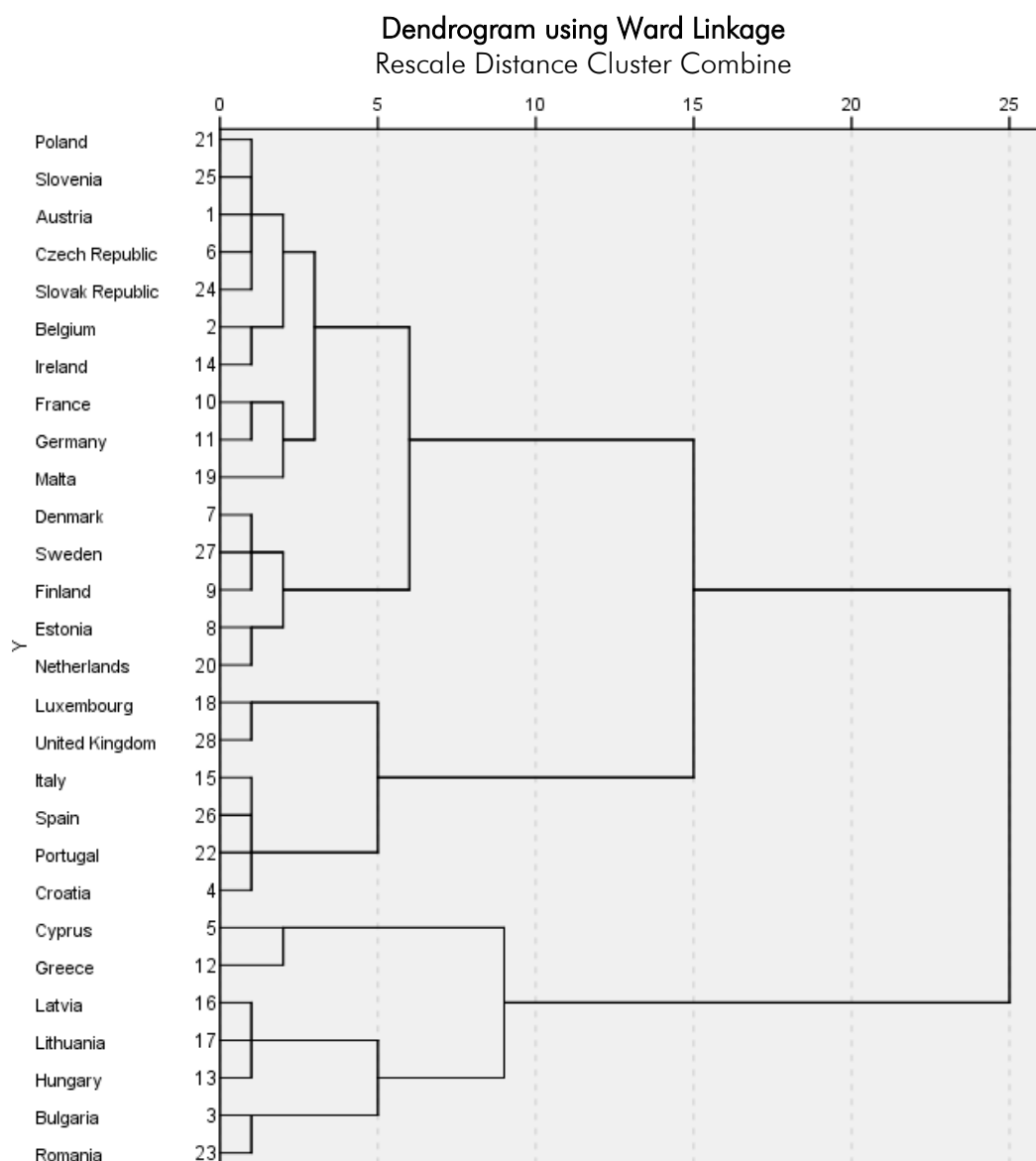
Cluster Analysis aims at classifying a set of units into groups with the characteristics of internal cohesion (the units in the same cluster must be similar to each other) and external separation (the clusters must be as distinct as possible).

We apply a hierarchical algorithm that yields a family of partitions. Starting from a basic level yielding distinct units to a level in which all elements are classified into a single cluster (Zani & Cerioli, 2007), different agglomeration criteria (single linkage, complete linkage, average linkage, Ward's method) and different distance measures (city-block, Euclidean, squared Euclidean) were applied. The results are stable regarding the criteria described above. Among these, we propose the one identified by the Ward method (SPSS software). The partition family (dendrogram) obtained is shown in Table 12.

This representation, together with the agglomeration schedule (not shown here), is helpful in choosing the partitions. We opt for the partition of the EU28 countries into the following 7 Clusters:

- Cluster A (2 countries): Luxembourg, United Kingdom
- Cluster B (5 countries): Denmark, Estonia, Finland, Netherlands, Sweden;
- Cluster C (10 countries): Austria, Belgium, Czech Republic, France, Germany, Ireland, Malta, Poland, Slovak Republic, Slovenia;
- Cluster D (4 countries): Croatia, Italy, Portugal, Spain;
- Cluster E (2 countries): Bulgaria, Romania;
- Cluster F (2 countries): Cyprus, Greece;
- Cluster G (3 countries): Latvia, Lithuania, Hungary.

Table 12 - Dendrogram of the EU28 countries



The degree of internal cohesion of a partition can be measured by the  $R^2 = B / T$  index, where the quantities B and T are the deviance between clusters and the total deviance of the variables used in the classification. For the proposed partition,  $R^2 = 0.80$ , which indicates a good degree of internal cohesion. For the single components (Formal financial inclusion, Social inclusion, Mainstream financial activity, Potential financial sector development) the value of the indices is respectively 0.90, 0.82, 0.74, and 0.73. In the final step of the analysis, the characteristics of the clusters are described. Table 13 lists the means of the four components (C1, C2, C3, C4) corresponding to the 7 clusters of countries.

**Table 13 - Cluster Analysis**

Cluster	C1	C2	C3	C4
A	1.1367728	-.4995950	1.9211282	1.0623981
B	1.1222041	-.7614347	-.4039088	-.8622503
C	.2797926	-.6159270	-.4751913	.4174555
D	-.3845550	.6292851	.9771360	.6858707
E	-1.8626591	2.2179517	-.4528051	.4825698
F	-1.6701056	1.1306277	1.2570729	-2.1015541
G	-.6929141	.5837780	-.8626264	-.4978711

Cluster features:

- Cluster A *“High Financial Development Regions”* (2 countries: Luxembourg, United Kingdom): Cluster A countries have the highest degree of formal financial inclusion (1.14), the highest degree of Mainstream Financial Activity (1.92) and the highest degree of Potential Financial Sector Development (1.06). For example, the intra-group average of the percentage of people who report having an account at a bank or other type of financial institution has a value of 0.97 against the general average of 0.91. The group is characterised by the high use of credit cards (0.67 against a general average of 0.36) and debit cards (0.90 against a general average of 0.82). Besides, there are other indexes, with an intra-group average less than the general average, represented by the percentage who cite family, relatives, or friends as their main source of money (0.16 against a general average of 0.26) and the percentage of people who report borrowing any money from family, relatives, or friends (0.11 against a general average of 0.14). The group is characterised by outstanding loans (110.74 against a general average of 62.68), outstanding deposits (111.62 against a general average of 61.02), ATMs (143.45 against a general average of 83.28), Institution (226.50 against a general average of 83.29) and, intermediation degree (1.00 against a general average of 0.99).
- Cluster B *“Financial and Social Inclusion Regions”* (5 countries: Denmark, Estonia, Finland, Netherlands, Sweden): Cluster B countries have the highest degree of formal financial inclusion (1.12), and the lowest degree of social exclusion (-0.76). In fact, the group is characterised by high use of accounts at a formal financial institution (1.00 against a general average of 0.91), of credit cards (0.44 against a general average of 0.36) and debit cards (0.97 against a general average of 0.82). Besides, there are other indexes, with an intra-group average less than the general average, represented by the percentage who cite family, relatives, or friends as their main source of money (0.15 against a general average of 0.26), confirming the low use of the informal financial system. The group is characterised by few people at risk of poverty or social exclusion (% of the total population) with a value of 18.54 (against a general average of 23.77) while severely materially deprived people register a value of 2.58 (against a general average of 8.76).
- Cluster C *“Financial Inclusion and Limited Social Exclusion Regions”* (10 countries: Austria, Belgium, Czech Republic, France, Germany, Ireland, Malta, Poland, Slovak Republic, Slovenia). Cluster C countries are characterised by formal financial inclusion (0.28) and, limited social exclusion (-0.62). For example, the intra-group average of the percentage of people who report having an account at a bank or another type of financial institution has a value of 0.93 against the general average of 0.91. Besides, there are other indexes, with an

intra-group average less than the general average, represented by the percentage who cite family, relatives, or friends as their main source of money (0.19 against a general average of 0.26) and the percentage of people who report borrowing any money from family, relatives, or friends (0.12 against a general average of 0.14) confirming the low use of the informal financial system. The group is characterised by limited social exclusion; in fact, in these countries, the indicator “people at risk of poverty or social exclusion” (% of the total population) has a value of 19.26 (against a general average of 23.77) and the indicator “material deprivation” has a value of 5.26 (against a general average of 8.76).

- Cluster D “*Limited Financial Inclusion and Social Exclusion Regions with Financial Development Potential*” (4 countries: Croatia, Italy, Portugal, Spain): Cluster D countries show limited formal financial inclusion (-0.38) and social exclusion (0.63). However, these countries register a potential financial sector development equal to 0.68. Specifically, the cluster is characterised by a low percentage of people who report saving or setting aside any money at a bank or other type of financial institution (0.41 against a general average of 0.44), by low use of the debit card (0.80 against a general average of 0.82) and internet (0.41 against a general average of 0.51). Moreover, people at risk of poverty or social exclusion (% of the total population) register a value of 27.72 (against a general average of 23.77) and of material deprivation with a value of 9.70 (against a general average of 8.76). The cluster contains 127 institutions, against a general average of 83.29, and ATMs number 126.31 (against a general average of 83.28).

- Cluster E “*Financial and Social Exclusion Regions*” (2 countries: Bulgaria, Romania): Cluster E countries are characterised by a lower degree of formal financial inclusion (-1.86) and a higher degree of social exclusion (2.22). It is characterised by a high use source of emergency funds from family or friends (0.52 against a general average of 0.26) and borrowing from family or friends (0.22 against a general average of 0.14), and it also confirms the difficulty of the traditional credit access for a lot of people. The cluster is characterised by countries in which people have any difficulties accessing a formal financial system. There is a very low use of accounts at a formal financial institution (0.65 against a general average of 0.91). The group is characterised by people at risk of poverty or social exclusion (% of the total population) with a value of 39.60 (against a general average of 23.77) and of material deprivation with a value of 27.85 (against a general average of 8.76).

- Cluster F “*Financial and Social Exclusion Regions with Low Financial Development Potential*” (2 countries: Cyprus, Greece): countries in this cluster have the lowest potential financial sector development (-2.10). They are also characterised by formal financial exclusion (-1.67) and social exclusion (1.13). These characteristics emerge in the values registered by ATMs (54.75 against a general average of 83.28), institutions (32.00 against a general average of 83.29) and intermediation degree (1.52 against a general average of 0.99). In terms of formal financial exclusion, these countries show a percentage of people who use an account equal to 0.87 (against a general average of 0.91), a credit card equal to 0.17 (against a general average of 0.37) and a debit card equal to 0.64 (against a general average of 0.82). The percentage of people who source emergency funds from family or friends is equal to 0.49 (against a general average of 0.26). The group is characterised by people at risk of poverty or social exclusion (the percentage of the total population) with a value of 31.65

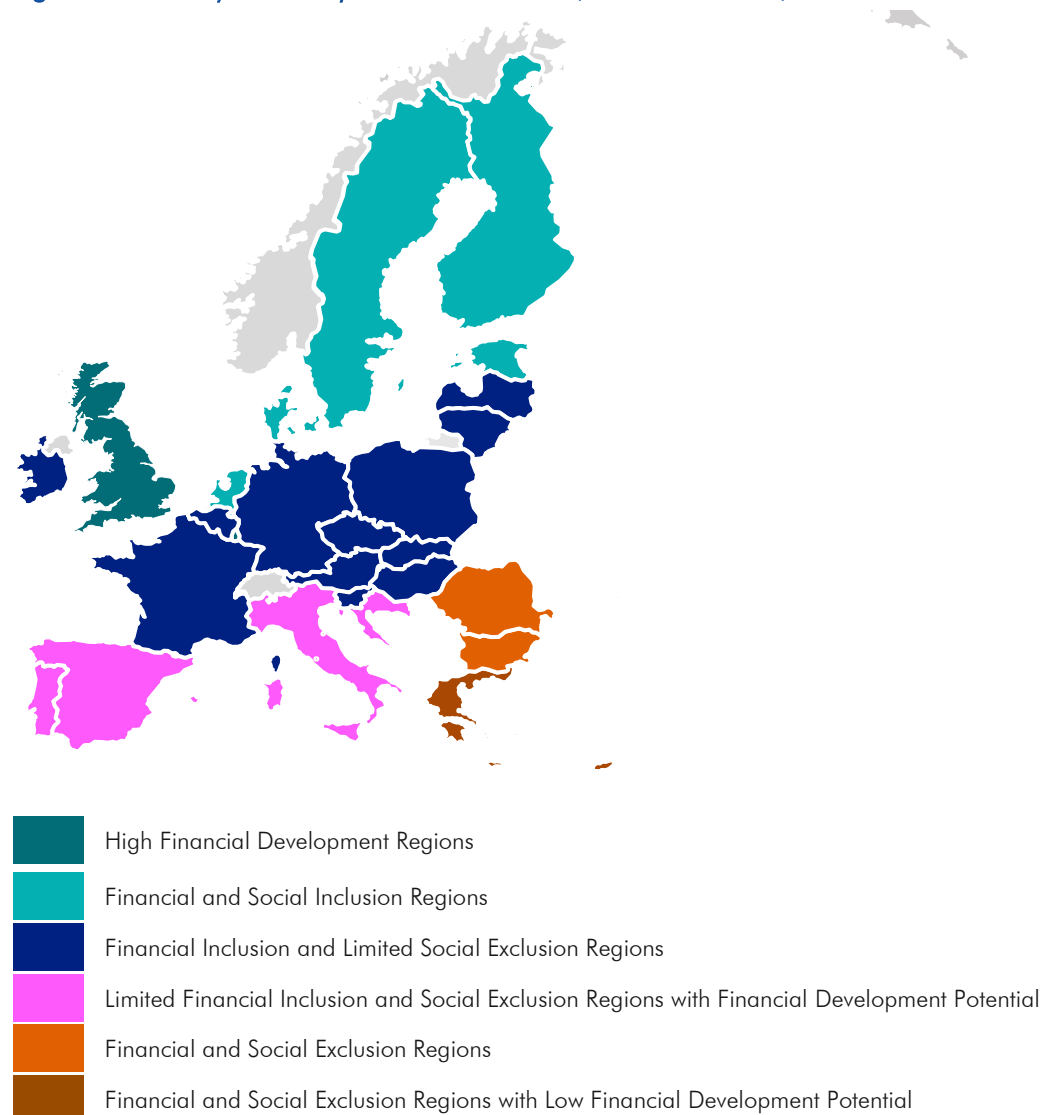
(against a general average of 23.77) and of material deprivation with a value of 18 (against a general average of 8.76).

- Cluster G “Low Financial Development Regions” (3 countries: Latvia, Lithuania, Hungary): countries in this cluster have the lowest mainstream financial activity (-0.50) and limited formal financial inclusion (-0.69). These countries also show social exclusion (0.58). They are characterised by outstanding loans (39.59 against a general average of 62.68) and outstanding deposits (39.62 against a general average of 61.02). In this group, there is low use of accounts at a formal financial institution (0.84 against a general average of 0.91), credit cards (0.15 against a general average of 0.36) and debit cards (0.70 against a general average of 0.82). The group is characterised by people at risk of poverty or social exclusion (percentage of the total population) with a value of 28.30 (against a general average of 23.77) and of material deprivation with a value of 14.17 (against a general average of 8.76).

## 6 Evaluation of the results and some development prospects

Cluster Analysis reveals the particular characteristics of countries within particular clusters (Figure 1).

Figure 1: Country cluster by financial inclusion, social inclusion, and financial sector development



Cluster A is composed of 2 countries of Northern Europe (Luxembourg and United Kingdom). These two countries have the highest degree of formal financial inclusion, the highest mainstream financial activity and the highest potential financial sector development. In particular, Cluster A countries are characterised by several financial inclusion indicators; the use of accounts at a formal financial institution, and few loans from family or friends. In fact, on the one hand, a formal account allows entry into the formal financial sector, enabling the transfer of wages, remittances, and government payments, and also encouraging formal saving and open access to credit. On the other hand, when people have difficulties in accessing formal loans, they are forced to borrow money from family or friends. There is a high percentage of people holding accounts (98.77% in Luxembourg and 96.37% in the United Kingdom), and a lower percentage of people borrowing from family and friends (8.02% in Luxembourg and 14.01% in the United Kingdom). The use of credit cards (69.79% in Luxembourg and 65.36% in the United Kingdom), debit cards (89.54% in Luxembourg and 91.45% in the United Kingdom) is also high. In fact, the banking and financial sector plays a key role in the economy of these two countries, and a wide range of products and personalised services, from traditional, classic savings product, to sophisticated solutions for creating and supplying wealth are on offer. In the United Kingdom, the number of outstanding loans from commercial banks, and the number of outstanding deposits compared to GDP are both high and equal to respectively 125.64 and 133.18. Values are slightly lower for Luxembourg. These two countries have a significant presence of institutions located throughout the country with the highest value registered in the United Kingdom (312 institutions) and a slightly lower value recorded in Luxembourg (141 institutions). The intermediation degree is equal to 0.94 in the United Kingdom and slightly higher in Luxembourg and equal to 1.06.

Cluster B contains five countries of Northern Europe (Denmark, Estonia, Finland, Sweden, Netherland). These countries show the highest degree of formal financial inclusion (like Cluster A) and the lowest degree of social exclusion. Among the indicators of financial inclusion, for example, the percentage of respondents who report having an account at a bank or other type of financial institution is the highest among the EU28 countries and equal to almost 100% in Denmark, Finland, Sweden, and the Netherlands, and equal to 97.99% in Estonia. In Cluster B, the percentage of respondents who report saving or setting aside any money at a bank or another type of financial institution is the highest in Sweden (75.43%) and the lowest in Estonia (46.93%). Furthermore, in the Netherlands, only 8% of families in case of emergency consider as the main source of emergency funds relatives and friends. The percentages who cite families, relatives, or friends as their main source of the money in Denmark, Finland and Sweden are slightly higher at 14%, 11% and 12% respectively. The value is higher in Estonia and equal to 29%. These data are confirmed by the fact that in Denmark, the banking sector is the largest credit provider. Denmark shows one of the highest degrees of concentration and is among the largest in Europe, measured as a ratio of GDP. In Estonia, there are signs that the economy has recently been recovering and there is a level of financial inclusion comparable with Western Europe. Denmark, Finland and the Netherlands present the lowest values of people at risk of poverty, almost equal to 16%. The percentage of people at risk of poverty increases in Estonia, where it is equal to 24.40%.

Cluster C contains two countries of Northern Europe (Belgium and Ireland), four countries of Eastern Europe (Slovakia, Slovenia, Czech Republic and Poland), three countries of Central Europe (Austria, France and Germany), and one country of Southern Europe (Malta). It comprises countries with financial inclusion and limited social exclusion, characterised by the highest percentages of people

holding an account at a formal financial institution, as in Germany (99.14%), and by the lowest value of borrowing from family or friends as observed in Malta (8%). Furthermore, with regard to social exclusion, six Cluster C countries have the lowest level of people at risk of poverty and social exclusion; these countries are Czech Republic (13.30), Austria (18.00) and Slovak Republic (18.10). An interesting aspect is that Cluster C includes countries such as Slovakia, Slovenia, Czech Republic, Poland and Malta, which in the second half of the last century lived through particular political and economic conditions. Other Cluster C countries shared similar political and economic values and ideologies in spite of country differences. For example, different indicators make Malta similar to the other countries: the intermediation degree is similar in Malta (0.61%) and Germany (0.74%), deprived people account for 4.40% both in Malta and in France, and the loans from relatives and friends are about 8% in Malta and in Belgium, France and Germany.

Cluster D contains one country of Eastern Europe (Croatia) and three countries of Southern Europe (Italy, Portugal and Spain). This Cluster shows limited financial inclusion and the presence of social exclusion. An in-depth study of the characteristics of the individual countries shows, for example, that in Croatia 43.43% of the population turn to families for emergency resources, while only 6.13% of the population approach banks. Furthermore, in Portugal, only 9% of people report borrowing any money from a bank or another type of financial institution and this despite the fact that 92% report having an account at a bank or other type of financial institution, and 87% of the population report making one or more deposits in their account per month. A similar situation is also recorded in Italy and Spain. People at risk of poverty in these countries vary between 25.10% in Portugal and 30% in Italy. In addition, these countries show potential for financial development as they have a high number of institutions and ATMs. In Italy there are in fact 264 institutions, a number lower only than that in the United Kingdom and France, while in Croatia there are 127.93 ATMs, a number lower only than that recorded in Luxembourg.

Cluster E contains two countries both of Eastern Europe (Bulgaria and Romania). These countries show the lowest degree of formal financial inclusion and the highest degree of social exclusion. Among the indicators of financial inclusion, for example, the percentage of respondents who report having an account at a bank or other type of financial institution is the lowest in EU28, at 58% in Romania and 72 % in Bulgaria. The percentage of respondents who report saving or setting aside any money at a bank or other type of financial institution is very low in Romania (14%) and slightly higher in Bulgaria (28%). In Romania, household savings are negative (gross expenditures exceed disposable income). Furthermore, in these two countries, people often look for emergency funding from relatives and friends, rather than from banks or other financial institutions; the percentage who cite families, relatives, or friends as their main source of money in Bulgaria is 47% and in Romania 58%. This situation is confirmed by the fact that "Bulgaria has one of the lowest proportions of banked citizens in the CEE region – 63%, 16 percentage points lower than average for CEE countries. Bulgarians have one of the lowest trust in bank ratios in the CEE region at just 34%. As many banks operating in Bulgaria are Greek-owned (with a market share around 20% in 2015), their potential divestment may pose supervisory challenges and result in substantial changes to the structure of the banking sector" (Deloitte, 2018). Bulgaria and Romania present the highest percentages of people at risk of poverty, 40.40 and 38.80 respectively.

In Cluster F, 2 countries of Southern Europe are present (Cyprus and Greece). These countries show the lowest potential financial sector development. In Cyprus, there are 50.07 commercial bank ATMs

per 100,000 adults, and the number of institutions is 36. In Greece, there is a higher rate of commercial bank ATMs per 100,000 (59.44), and the number of institutions is 28. The intermediation degree for these two countries is high; 1.54% in Cyprus and 1.50% in Greece.

This situation implies the presence in these two countries of formal financial exclusion and social exclusion. In Greece, for example, around 63% of the population resort to relatives and friends for emergency financial resources and only 2% of the population request loans from banks or other types of financial institutions. Cyprus shows similar values. In addition, the percentage of people at risk of poverty is 27.70% in Cyprus and 35.60% in Greece.

Cluster G contains three countries of Eastern Europe (Latvia, Lithuania and Hungary). These countries show the lowest mainstream financial activity and very limited formal financial inclusion (- 0.69). They also present social exclusion. They present low values in terms of the total amount of all types of outstanding loans of resident non-financial corporations and households with commercial banks, as well as the total amount of all types of outstanding deposits of resident nonfinancial corporations and households with commercial banks compared to GDP. Hungary in particular registers very low values of outstanding loans and outstanding deposits, equal respectively to 30.51% and 36.51%. In fact, in Hungary, trust in the banking sector is very low, and only 27% of the population say they have confidence in it (Deloitte, 2018). In Latvia, almost 93% of people use an account at a formal financial institution, while in Hungary the percentage is 75%. Furthermore, here too, emergency funds are mainly sourced from families rather than financial institutions. Finally, the percentage of people at risk of poverty is 26.30% in Hungary and 30.10% in Lithuania.

## 7 Conclusions

The analysis of the phenomena of financial inclusion and social inclusion, together with the development of the financial sector offers useful food for thought.

First, in some EU28 countries (Bulgaria, Cyprus, Greece and Romania), there are still people excluded from the formal financial system or who resort to relatives and friends for credit. These are people who may be exposed to unforeseen events, such as the temporary unavailability of income, or who are unable to access bank services often for relational reasons, often including low education levels, geographical dislocation in areas with economic and financial difficulties, etc. In these countries, these issues are linked to social exclusion.

Secondly, it is clear that the EU28 countries in which there is a high degree of potential financial sector development (Luxembourg and United Kingdom) are also those showing the highest levels of financial and social inclusion.

The analysis could usefully be extended by further studies. The identification of geographical areas with different characteristics should be useful for the design and planning of targeted interventions aimed at financial and social inclusion, access to credit and development of the financial system, in several countries investigated. Given the numerous initiatives aimed at harmonization and improvement of European policies, a significant role could be played by microfinance. Microfinance initiatives help to develop financial sectors targeting financially and socially excluded people.



Microfinance is a proven tool that promotes financial inclusion of the poor, supports their entrepreneurial ambitions and generates employment<sup>4</sup>.

---

<sup>4</sup> More on the role of Microfinance, see: [https://www.eif.org/news\\_centre/publications/EIF\\_Working\\_Paper\\_2020\\_67.htm](https://www.eif.org/news_centre/publications/EIF_Working_Paper_2020_67.htm)

## References

- Aghion, P., & Hewitt, P. (2005). *Appropriate Growth Policy: A Unifying Framework. The 2005 Joseph Schumpeter Lecture. Amsterdam: European Economic Association.*
- Amado, A., Novak Stancliffe, R. J., & McCarren, M. (2013). Social inclusion and community participation of individuals with intellectual/developmental disabilities. *Intellectual and Developmental Disabilities, 51*(5), 360-75.
- Amidzic, G., Massara, A., & Mialou, A. (2014). Assessing Countries' Financial Inclusion Standing - A New Composite Index, *Working Paper, International Monetary Fund, 14*(36).
- Amputia, M., & Ehrman, M. (2017). Financial inclusion: what's it worth? *Working Paper Series, European Central Bank.*
- Atkinson, A. B. (1998). *Poverty in Europe.* Oxford: Blackwell.
- Atkinson, A. B., Cantillon, B., Marlier, E., & Nolan B. (2002). *Social Indicator: The EU Social Inclusion.* Oxford: Oxford University Press.
- Atkinson, A. B., Nolan, B., & Marlier, E. (2004). Indicators and Targets for Social Inclusion in the European Union. *Journal of Common Market Study, 42*(1), 47-75.
- Atkinson, A. B., & Marlier, E. (2010). *Analysing and Measuring Social Inclusion in a Global Context.* New York: UN DESA.
- Beauvais, C., & Jenson, J. (2002). Social Cohesion: Updating the State of the Research. *Social Canadian Policy Research Networks Discussion Paper, 22.*
- Beck, T. L. (2000). Financial intermediation and growth: Causality and causes. *Journal of Monetary Economics 46,* 31-77.
- Beck, T., Demirguc-Kunt, A., Laeven L., & Levine, R. (2008). Finance, firm size, and growth. *Journal of Money, Credit and Banking, 40*(7), 1379-405.
- Beck, T., Demirguc-Kunt, A., & Levine, P. (2007). Finance, Inequality and the Poor. *Journal of Economic Growth, 12*(1), 27-49.
- Berger, P. (1998). *The Limits of Social Cohesion: Conflict and Mediation. Pluralist Societies.* Westview CO, Boulder.
- Bernard, P. (1999). Social Cohesion: Critique d'un quasi-concept. *Lien social et Politiques RIAC, 41,* 47-59.
- Bossert, W., D'Ambrosio C., & Peragine, V. (2007). Deprivation and social exclusion. *Economica, 74,* 777-803.
- Brunkhorst, H. (2005). *Solidarity: From Civic Friendship to a Global Legal Community.* Cambridge: MIT Press.
- Burchardt, T., Le Grand, J., & Piachaud, D. (1999). Social Exclusion in Britain 1991-1995. *Social Policy & Administration (33),* 227-44.

- Burgess, R., & Pande, R. (2005). Do Rural Banks Matter? Evidence from the Indian Social Banking Experiment. *The American Economic Review* 95 (3), 780-95.
- Camara, N., & Tuesta, D. (2014). Measuring Financial Inclusion: A Multidimensional Index. *Working Paper, BBVA Research* 14 (26).
- Carbo, S., Gardner, E. P., & Molyneux, P. (2005). *Financial Exclusion*. London: Palgrave MacMillan.
- Chakravarty, S. & D'Ambrosio, C. (2006). The measurement of social exclusion. *Rev. Income Wealth Series*, 52, 377-98.
- Chakravarty, S., & Pal, R. (2010). Measuring Financial Inclusion: An Axiomatic Approach. *Working Paper, Indira Gandhi Institute of Development Research* (3), 1-36.
- Clement, T., & Bigby, C. (2009). Breaking out of a distinct social space: Reflection on supporting community participation for people with severe and profound intellectual disability. *Journal of Applied Research in Intellectual Disabilities*, 22, 264-75.
- Cobigo, V., Ouellette-Kuntz, H., Lysaght, R., & Martin L. (2012). Shifting our conceptualization of social inclusion. *Stigma Research and Action* 2 (2), 75-84.
- Conroy, J. (2005). APEC and Financial Exclusion: Missed Opportunities for Collective Action? *Asia- Pacific Development Journal*, 12(1), 53-79.
- Daly, M. (2006). Social Exclusion as Concept and Policy Template in the European Union. *Working Paper Series, Center for European Studies*, 135, 1-17.
- Daly, M., & Silver, H. (2008). Social Exclusion and Social Capital. *Theory & Society*, 6, 537-66.
- Deakin, N., Thomas, N., & Davis, A. (1995). *Public welfare services and social exclusion: the development of consumer-oriented initiatives in the European Union*. European foundation for the improvement of living and working conditions. Dublin.
- Dehejia, R., & Gatti, R. (2002). Child Labor: The Role of Income Variability and Access to Credit Across Countries. *Working Paper, NBER (9018)*, Cambridge, MA.
- Deloitte. (2018). Fintech in CEE. *Department for International Trade*.
- Demirgüç-Kunt, A., Klapper, L., Singer, D., & Van Oudheusden, P. (2015). The Global Findex Database 2014 Measuring Financial Inclusion around the World. *Policy Research Working Paper, World Bank (7255)*, 2-69.
- Dugarova, E. (2015). Social Inclusion, Poverty Eradication and the 2030 Agenda for Sustainable Development. *Working Paper, UNRISD*, 14, 1-23, October.
- Dugarova, E., & Lavers, T. (2014). *Social Inclusion and the Post-2015 Sustainable Development Agenda*, Paper prepared for the UNITAR's Briefing for UN Delegates on Post-2015 Development Agenda: Social Inclusion.
- Duggan, C., & Linehan, C. (2013). The role of natural supports in promoting independent living for people with disabilities: A review of existing literature. *Journal of Learning Disabilities*, 41, 199-207.

- Ergungor, E. (2008). Financial system structure and economic growth: Structure matters. *Working papers, Federal Reserve Bank of Cleveland*, 3(5), 1-22.
- European Commission. (2008). *Financial Services Provision and Prevention of Financial Exclusion*. Bruxelles.
- European Commission. (2011). *The social dimension of the Europe 2020 strategy, A report of the Social protection committee*. Bruxelles.
- European Union (2004). *Joint Report on Social Inclusion*. Directorate General for Employment and Social Affairs. Bruxelles.
- Eurostat. (2013). The measurement of poverty and social inclusion in the EU: achievements and further improvements. *Seminar "The way forward in poverty measurement"*. United Nations Economic Commission For Europe, 2-4 December.
- Ferri, G., & Mattesini, F. (1997). Finance, Human Capital and Infrastructure: an Empirical Investigation on Postwar Italian Growth. *Working Paper, Bank of Italy* (321).
- Finaccess. (2016). *FinAccess Household Survey*, Central Bank of Kenya.
- Frazer, H. & Marlier E. (2014). Assessment of Progress towards the Europe 2020 Social Inclusion Objectives: Main Findings and Suggestions on the Way Forward - A Study of National Policies, *European Commission, Bruxelles*.
- Gertler, M., & Rose, A. (1994). Finance, Public Policy and Growth. In Caprio, G., & Atiljas, J. A., *Financial Reform: Theory and Experience*. New York: Hanson Cambridge University Press, 13-45.
- Ghosh, J. (2010). Poverty Reduction in China and India: Policy Implications of Recent Trends. *Working Paper, DESA*, 92.
- Gloukoviezoff, G. (2004). The "Caisse d'Epargne" and Households Financial Exclusion. Which Actions Should Be Taken and What Are the Prospects? *Access to Finance Conference, 28-29 October*. Brussels.
- Goldsmith, R. (1969). *Financial Structure and Development*. New Haven: Yale University Press.
- Goodin, R. E. (1996). Inclusion and exclusion. *European Journal of Sociology*, 37, 343-71.
- Gortsos, C. (2016). Financial Inclusion: An overview of its various dimensions and the initiatives to enhance its current level. *Working Papers ECEFIL* (15).
- Hall, E. (2010). Spaces of social inclusion and belonging for people with intellectual disabilities. *Journal of Intellectual Disability Research*, 54(1), 48-57.
- Hall, S. (2009). The social inclusion of people with disabilities: A qualitative meta-analysis. *Journal of Ethnographic and Qualitative Research* (3), 162-73.
- Hanning, A., & Jansen, S. (2010). Financial Inclusion and Financial Stability: Current Policy Issues. *Working Paper*.
- Hickey, S., & du Toit, A. (2007). Adverse Incorporation, Social Exclusion and Chronic Poverty. *Working Paper, Chronic Poverty Research Centre, University of Manchester*, (81) Manchester.

- Honohan, P. (2004). Financial Development, Growth and Poverty: How Close are the Links? In Goodhard, E. C., *Financial Development and Economic Growth: Explaining the Links*. London: Palgrave.
- Honohan, P. (2008). Cross-Country Variation in Household Access to Financial Services. *Journal of Banking and Finance* (32), 2493-500.
- Hospes, O., & Clancy, J. (2011). Unpacking the discourse of social inclusion in value chains. In Helmsing, A. H. J., & Vellema, S., *Value Chains, Inclusion and Endogenous Development: Contrasting Theories and Realities*. London: Routledge, 23-41.
- Jayarathne, J., & Strahan, P. E. (1996). The Finance-Growth Nexus: Evidence from Bank Branch Deregulation. *The Quarterly Journal of Economics*, 369-70.
- Johnson, S., & Nino-Zarazua, M. (2011). Financial Access and Exclusion in Kenya and Uganda. *Journal of Development Studies*, 47(3), 475-96.
- Kempson, E., & Collard, S. (2012). *Developing a vision for financial inclusion*. London: Friends Provident Foundation.
- Kempson, E., & Whyley, C. (1999). *Kept out or opted out? Understanding and combating financial exclusion*. Bristol: Policy Press.
- Kempson, E., Whyley, C., Casley, J., & Collard, S. (2000). *In or Out? Financial Exclusion: A Literature and Research Review*. London: Financial Services Authority.
- King, R. G., & Levine, R. (1993). Finance and Growth: Schumpeter Might be Right. *The Quarterly Journal of Economics*, 108, 717-738.
- Korynski, P. (2013). *Calculation of the Composite Index of Financial Inclusion (IFI): A Methodological Note*. Microfinance Centre (MFC).
- Kumar, N. (2013). Financial inclusion and its determinants: evidence from India. *Journal of Financial Economic Policy*, 5(1), 4-19.
- Kumar, K. P., & Laha, A. (2011). Determinants of Financial Inclusion: A Study of Some Selected Districts of West Bengal, India. *ICSSR Major Research*.
- Kymlicka, W. (2010). The rise and fall of multiculturalism? New debates on inclusion and accommodation in diverse societies. *International Social Science Journal*, 61(199), 97-112.
- Labonté, R., Hadi, A., & Kauffmann, X. E. (2011). Indicators of Social Exclusion and Inclusion: A Critical and Comparative Analysis of the Literature. *Working Papers, EiExchange*, 2(8).
- Levine, R. (1997). Financial Development and Economic Growth: Views and Agenda. *Journal of Economic Literature*, 35, 688-726.
- Levine, R. (2003). More on finance and growth: more finance, more growth? *Federal Reserve Bank of St. Louis Review*, 85(4), 31-46.
- Levine, R., Loayza, N., & Beck, T. (2002). Financial Intermediation and Growth: Causality and Causes. *Central Banking, Analysis, & Economic Policies Book Series*, 3, 31-84.

- Levitas, R. (2006). The concept and measurement of social exclusion. In Levitas, R., Gordon D., & Pantazis, C., *Poverty and Social Exclusion in Britain*. Bristol: The Policy Press.
- Leyshon, A., & Thrift, N. (1995). Geographies of financial exclusion: financial abandonment in Britain and the United States. *Transactions of the Institute of British Geographers*, 3, 312-41.
- Marlier, E., & Atkinson, A. B. (2010). Indicators of poverty and social exclusion in a global context. *Journal of Policy Analysis and Management* 29, 285-304.
- McKinnon, R. I. (1973). Money and Capital in Economic Development. *Journal of International Economics* 4, 223-24.
- Mehrotra, N., Puhazhendhi, V., Nair, G., & Sahoo, B. (2009). Financial inclusion - an Overview. *Occasional Paper, Department of Economic Analysis and Research, National Bank for Agriculture and Rural Development (NABARD) 48, Mumbai*.
- Mohan, R. (2006). Economic Growth, Financial Deepening and Financial Inclusion. *Address at the Annual Bankers' Conference 2006, Hyderabad, November 3*.
- Muffels, R., & Fouarge, D. (2001). Social Exclusion and Poverty: Definition, Public Debate and Empirical Evidence. In D. G. Mayes, *Social Exclusion and European Policy*. Northampton: Edward Elgar, 93-124.
- Noya, A., & Clarence, E. (2008). *Improving social inclusion at the local level through the social economy*. OECD LEED Programme, September.
- OECD. (2013). *Financial Literacy and Inclusion, Results of OECD /INFE Survey Across Countries and by Gender*. Paris.
- Pantazis, C., Gordon, D., & Levitas, R. (2006). *Poverty and Social Exclusion in Britain: The Millennium Survey*. Bristol: Policy Press.
- Perez-Moreno, S. (2011). Financial development and poverty in developing countries: a causal analysis. *Empirical Economics*, 41(11), 57-80.
- Power, A. (2013). Making pace for belonging: Critical reflections on the implementation of personalized adult social care under the veil of meaning full inclusion. *Social Science & Medicine*, 88, 68-75.
- Putnam, R. D. (2007). E Pluribus Unum: Diversity and Community in the Twenty-first Century. *The 2006 Johan Skytte Prize Lecture, Scandinavian Political Studies*, 30(2), 137-74.
- Quinn, G., & Doyle, S. (2012). *Getting a life—living independently and being included in the community: A legal study of the current use and future potential of the EU Structural Funds to contribute to the achievement of Article 19 of the United Nations Convention on the Rights of Persons with Disabilities*. Report to the Office of the United Nations High Commissioner for Human Rights, Regional Office for Europe.
- Rajan, R. G., & Zingales, L. (1998). Financial Dependence and Growth. *American Economic Review* 88(3), 559-86.
- Rajan, R. G., & Zingales, L. (2003). *Saving Capitalism from Capitalists*. New York: Crown Business.

- Reichrath, P., de Witte, L., & Verdonschot, M. (2009). Impact of environmental factors on community participation of persons with an intellectual disability: A systematic review. *Journal of Intellectual Disabilities Research, 54*-64.
- Robinson, M. S. (2001). *The Microfinance Revolution - Sustainable Finance for the Poor - Lesson from Indonesia*. Washington DC: World Bank.
- Rojas-Suarez, L. (2010). Access to Financial Services in Emerging Powers: Facts, Obstacles, and Policy Implications. *OECD Global Development Background Papers*.
- Sarma, M. (2008). Index of Financial Inclusion. *ICRIER Working Paper*.
- Sarma, M. (2012). Index of Financial Inclusion. A measure of financial sector inclusiveness. *Working Papers, Money, Finance, Trade and Development, 7*.
- Sarma, M. (2015). Measuring financial Inclusion. *Economics Bulletin, 1*, 35.
- Sathyan, S., & Panda, P. K. (2016). Financial Inclusion in India: An Analysis of Pattern and Determinants. *Indian Journal of Finance, 10*(4), 41-53.
- Seharawat, M., & Giri, A. K. (2015). Financial development, poverty and rural-urban income inequality: evidence from South Asian countries. *Quality and Quantity, 50*(2), 1-14.
- Silver, H. (1994). Social Exclusion and Social Solidarity: Three Paradigms. *International Labour Review, 133*(5-6), 531-78.
- Silver, H. (2015). The Contexts of Social Inclusion. *Working Paper DESA (144)*, October.
- Simplican, S. C., Leader, G., Kosciulek, J., & Leahy, M. (2015). Defining social inclusion of people with intellectual and developmental disabilities: An ecological model of social networks and community participation. *Research in Developmental Disabilities, 38*, 18-29.
- Sinclair, S. P. (2001). Financial exclusion: An Introductory Survey. *Report of Centre for Research in Socially Inclusive Services*. Edinburgh: Heriot-Watt University.
- Singh, K., & Kondan, S. (2012). Financial Inclusion, Development and Its Determinants: An Empirical Evidence of Indian States. *The Asian Economic Review, 53*(1), 115-34.
- Toye, M., & Infanti, J. (2004). Social Inclusion and Community Economic Development Literature Review. *Pan-Canadian Community Development Learning Network Project Framework, 3*, August.
- Tsakloglou, P., & Papadopoulos, F. (2002). Identifying population groups at high risk of social exclusion. In *Social exclusion in European welfare states*. Cheltenham: Edward Elgar.
- United Nations. (2010). *Analysing and Measuring Social Inclusion in a Global Context*. New York: Department of Economic and Social Affairs.
- United Nations Capital Development Fund. (2006). *Building Inclusive Financial Sectors for Development*. New York: United Nations.
- Walker, H. M., Calkins, C., Wehmeyer, M., Walke, L., Bacon, A., & Palmer, S. B. (2011). A social ecological approach to promote self-determination. *Exceptionality: A Special Education Journal, 19*(1), 6-18.

- Woodward, A., & Kohli, M. (2001), *Inclusions and exclusions in European society*. London: Routledge, 1-17
- World Bank. (2005). *Indicators of Financial Access – Household Level Surveys*. Washington, DC.
- World Bank. (2006). *Measuring banking sector development*. Washington, DC.
- World Bank. (2007). *Social Exclusion and The Eu's Social Inclusion Agenda*. Washington, DC.
- World Bank. (2013). *Inclusion Matters: The Foundation for Shared Prosperity*. Washington, DC.
- Zani, S., & Cerioli, A. (2007). *Analisi dei dati e data mining per le decisioni aziendali*. Milano: Giuffrè.



## About ...

### ... the European Investment Fund

The European Investment Fund (EIF) is Europe's leading risk finance provider for small and medium sized enterprises (SMEs) and mid-caps, with a central mission to facilitate their access to finance. As part of the European Investment Bank (EIB) Group, EIF designs, promotes and implements equity and debt financial instruments which specifically target the needs of these market segments.

In this role, EIF fosters EU objectives in support of innovation, research and development, entrepreneurship, growth, and employment. EIF manages resources on behalf of the EIB, the European Commission, national and regional authorities and other third parties. EIF support to enterprises is provided through a wide range of selected financial intermediaries across Europe. EIF is a public-private partnership whose tripartite shareholding structure includes the EIB, the European Union represented by the European Commission and various public and private financial institutions from European Union Member States, the United Kingdom, and Turkey. For further information, please visit [www.eif.org](http://www.eif.org).

### ... EIF's Research & Market Analysis

Research & Market Analysis (RMA) supports EIF's strategic decision-making, product development and mandate management processes through applied research and market analyses. RMA works as internal advisor, participates in international fora and maintains liaison with many organisations and institutions.

### ... this Working Paper series

The EIF Working Papers are designed to make available to a wider readership selected topics and studies in relation to EIF's business. The Working Papers are edited by EIF's Research & Market Analysis and are typically authored or co-authored by EIF staff, or written in cooperation with EIF. The Working Papers are usually available only in English and distributed in electronic form (pdf).

*The page is intentionally left blank*

## EIF Working Papers

- 2009/001 *Microfinance in Europe – A market overview.*  
November 2009.
- 2009/002 *Financing Technology Transfer.*  
December 2009.
- 2010/003 *Private Equity Market in Europe – Rise of a new cycle or tail of the recession?*  
February 2010.
- 2010/004 *Private Equity and Venture Capital Indicators – A research of EU27 Private Equity and Venture Capital Markets.*  
April 2010.
- 2010/005 *Private Equity Market Outlook.*  
May 2010.
- 2010/006 *Drivers of Private Equity Investment activity. Are Buyout and Venture investors really so different?*  
August 2010
- 2010/007 *SME Loan Securitisation – an important tool to support European SME lending.*  
October 2010.
- 2010/008 *Impact of Legislation on Credit Risk – How different are the U.K. and Germany?*  
November 2010.
- 2011/009 *The performance and prospects of European Venture Capital.*  
May 2011.
- 2011/010 *European Small Business Finance Outlook.*  
June 2011.
- 2011/011 *Business Angels in Germany. EIF's initiative to support the non-institutional financing market.*  
November 2011.
- 2011/012 *European Small Business Finance Outlook, Dec. 2011.*  
December 2011.
- 2012/013 *Progress for microfinance in Europe.*  
January 2012.
- 2012/014 *European Small Business Finance Outlook, May 2012.*  
May 2012.
- 2012/015 *The importance of leasing for SME finance.*  
August 2012.
- 2012/016 *European Small Business Finance Outlook.*  
December 2012.
- 2013/017 *Forecasting distress in European SME portfolios.*  
May 2013.
- 2013/018 *European Small Business Finance Outlook.*  
June 2013.

- 2013/019 *SME loan securitisation 2.0 – Market assessment and policy options.*  
October 2013.
- 2013/020 *European Small Business Finance Outlook.*  
December 2013.
- 2014/021 *Financing the mobility of students in European higher education.*  
January 2014.
- 2014/022 *Guidelines for SME Access to Finance Market Assessments.*  
April 2014.
- 2014/023 *Pricing Default Risk: the Good, the Bad, and the Anomaly.*  
June 2014.
- 2014/024 *European Small Business Finance Outlook.*  
June 2014.
- 2014/025 *Institutional non-bank lending and the role of debt funds.*  
October 2014.
- 2014/026 *European Small Business Finance Outlook.*  
December 2014.
- 2015/027 *Bridging the university funding gap: determinants and consequences of university seed funds and proof-of-concept Programs in Europe.*  
May 2015.
- 2015/028 *European Small Business Finance Outlook.*  
June 2015.
- 2015/029 *The Economic Impact of EU Guarantees on Credit to SMEs - Evidence from CESEE Countries.*  
July 2015.
- 2015/030 *Financing patterns of European SMEs: An Empirical Taxonomy*  
November 2015
- 2015/031 *SME Securitisation – at a crossroads?*  
December 2015.
- 2015/032 *European Small Business Finance Outlook.*  
December 2015.
- 2016/033 *Evaluating the impact of European microfinance. The foundations.*  
January 2016
- 2016/034 *The European Venture Capital Landscape: an EIF perspective.*  
*Volume I: the impact of EIF on the VC ecosystem.*  
June 2016.
- 2016/035 *European Small Business Finance Outlook.*  
June 2016.
- 2016/036 *The role of cooperative banks and smaller institutions for the financing of SMEs and small midcaps in Europe.*  
July 2016.
- 2016/037 *European Small Business Finance Outlook.*  
December 2016.

- 2016/038 *The European Venture Capital Landscape: an EIF perspective. Volume II: Growth patterns of EIF-backed startups.*  
December 2016.
- 2017/039 *Guaranteeing Social Enterprises – The EaSI way.*  
February 2017.
- 2017/040 *Financing Patterns of European SMEs Revisited: An Updated Empirical Taxonomy and Determinants of SME Financing Clusters.*  
March 2017.
- 2017/041 *The European Venture Capital landscape: an EIF perspective. Volume III: Liquidity events and returns of EIF-backed VC investments.*  
April 2017.
- 2017/042 *Credit Guarantee Schemes for SME lending in Western Europe.*  
June 2017.
- 2017/043 *European Small Business Finance Outlook.*  
June 2017.
- 2017/044 *Financing Micro Firms in Europe: An Empirical Analysis.*  
September 2017.
- 2017/045 *The European venture capital landscape: an EIF perspective. Volume IV: The value of innovation for EIF-backed startups.*  
December 2017.
- 2017/046 *European Small Business Finance Outlook.*  
December 2017.
- 2018/047 *EIF SME Access to Finance Index.*  
January 2018.
- 2018/048 *EIF VC Survey 2018 – Fund managers’ market sentiment and views on public intervention.*  
April 2018.
- 2018/049 *EIF SME Access to Finance Index – June 2018 update.*  
June 2018.
- 2018/050 *European Small Business Finance Outlook.*  
June 2018.
- 2018/051 *EIF VC Survey 2018 - Fund managers’ perception of EIF’s Value Added.*  
September 2018.
- 2018/052 *The effects of EU-funded guarantee instruments on the performance of Small and Medium Enterprises - Evidence from France.*  
December 2018.
- 2018/053 *European Small Business Finance Outlook.*  
December 2018.
- 2019/054 *Econometric study on the impact of EU loan guarantee financial instruments on growth and jobs of SMEs.*  
February 2019.
- 2019/055 *The economic impact of VC investments supported by the EIF.*  
April 2019.

- 2019/056 *The real effects of EU loan guarantee schemes for SMEs: A pan-European assessment.*  
June 2019
- 2019/057 *European Small Business Finance Outlook.*  
June 2019.
- 2019/058 *EIF SME Access to Finance Index – June 2019 update.*  
July 2019.
- 2019/059 *EIF VC Survey 2019 - Fund managers' market sentiment and policy recommendations.*  
September 2019.
- 2019/060 *EIF Business Angels Survey 2019 - Market sentiment, public intervention and EIF's value added.*  
November 2019.
- 2019/061 *European Small Business Finance Outlook.*  
December 2019.
- 2020/062 *The Business Angel portfolio under the European Angels Fund: An empirical analysis.*  
January 2020.
- 2020/063 *ESG considerations in Venture Capital and Business Angel investment decisions: Evidence from two pan-European surveys.*  
June 2020.
- 2020/064 *The market sentiment in European Private Equity and Venture Capital: Impact of COVID-19.*  
July 2020.
- 2020/065 *The social return on investment (SROI) of four microfinance projects.*  
August 2020.
- 2020/066 *Measuring microfinance impact: A practitioner perspective and working methodology.*  
August 2020.
- 2020/067 *European Small Business Finance Outlook 2020.*  
September 2020.
- 2020/068 *The EIF SME Access to Finance Index September 2020 update.*  
October 2020.
- 2021/069 *Scale-Up Financing and IPOs: Evidence From Three Surveys.*  
January 2021.
- 2021/070 *The impact of VC on the exit and innovation outcomes of EIF-backed start-ups.*  
February 2021.
- 2021/071 *EIF Venture Capital, Private Equity Mid-Market & Business Angels Surveys 2020: Market sentiment – COVID-19 impact – Policy measures.*  
February 2021.
- 2021/072 *Financial and social inclusion in Europe.*  
March 2021.

*The page is intentionally left blank*

